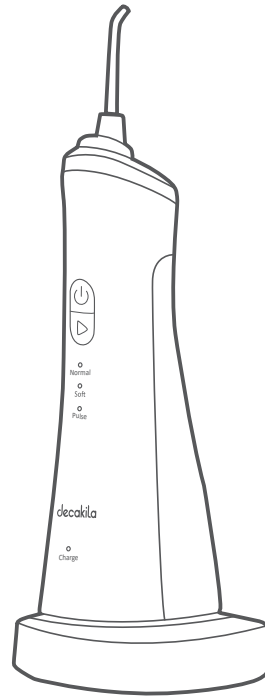


# decakila



KUTB004W  
ORAL IRRIGATOR 



# CONTENTS

IMPORTANT SAFETY INSTRUCTIONS	01
KNOW YOUR WIRELESS WATER FLOSSER	03
OPERATION INSTRUCTION	04
TROUBLESHOOTING	07
WASTE DISPOSAL	08
DETACH RECHARGEABLE BATTERY	08
ENVIRONMENT FRIENDLY DISPOSAL	09

# **IMPORTANT SAFETY INSTRUCTIONS**

## **DANGER**

- Never use this appliance unless understand the operation process and safety description to avoid being hurt by improper operation.
- Only operate this appliance by following the operating way specified in this instruction manual.
- Do not dismantle this appliance or change its components to avoid this appliance being damaged or causing electric shock.
- Do not fill the water tank with water exceeding 40°C to do oral cleaning to avoid scald.
- Please unplug and then remove the appliance from the water if it drops into water when being charged.
- Please replace the charger and then operate it again if the power cord or plug is damaged.
- Do not heat the appliance with fire and do not charge, use or dispose it at high-temperature places.

## **CAUTION**

- Use this product only for its intended use as described in this manual.
- Do not press gums or teeth by the nozzle with excessive force to avoid the gums being hurt.
- Put the appliance at a safe place to avoid it being damaged or dropped into water.
- Do not immerse the appliance into water to avoid malfunction or causing fire, electric shock and explosion.
- Do not plug or unplug with wet hands.
- Make sure that your outlet voltage corresponds to the voltage stated on the rating label.
- Do not operate any appliance with a damaged charger, cord or plug or after the appliance malfunctions, or has been damaged in any manner or dropped into water. Return appliance to an authorized service facility for examination, repair or adjustment.
- If the supply cord is damaged, it must be replaced by the manufacturer, its service agent or similarly qualified persons in order to avoid a hazard.
- Do not damage, destroy or modify the power cord. Do not drag, bend or warp the power cord, and do not put it under heavy object

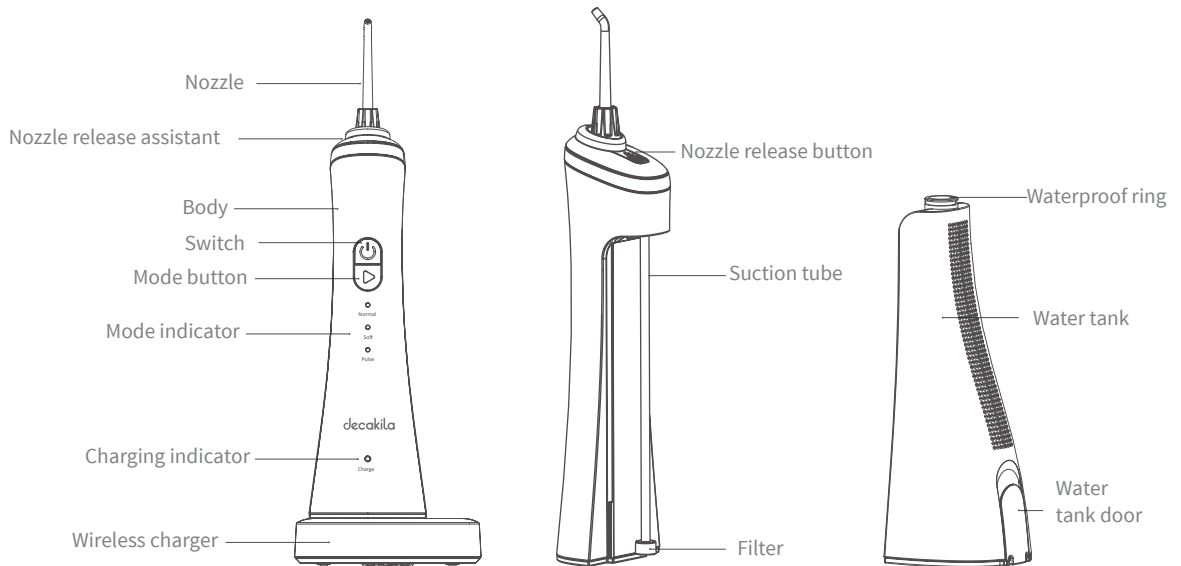
or clamp it among objects.

- Grasp the plug to pull out the power cord when unplug, do not drag the cord. 11. Make the appliance or power cord be away from hot objects.
- Unplug the appliance before perform maintenance.
- Do not put the appliance at a high-temperature or moist place to avoid being exposed to sunlight.
- Do not charge the appliance under a high-temperature or moist place such as bathroom or toilet.
- Please unplug the appliance if the appliance is not used for a long time to avoid fire or danger.

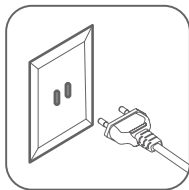
## **NOTE**

- Please send the appliance needed to be repaired to manufacturer as it is of no replaceable or serviceable parts.
- Please do not use the appliance if without nozzle being attached.
- Do not load the appliance with the mouth rinse which may corrode the appliance.
- This appliance can be used by children and persons with reduced physical, sensory or mental capabilities or lack of experience and knowledge if they have been given supervision or instruction concerning use of the appliance in a safe way and understand the hazards involved. Cleaning and user maintenance shall not be made by children without supervision.
- Children shall not play with the appliance.
- Please consult the doctor whether you can use the appliance if you have had dentistry surgical operation in past two months or are under being subject to dental treatment.
- Save these instructions.

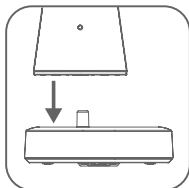
# KNOW YOUR WIRELESS WATER FLOSSER



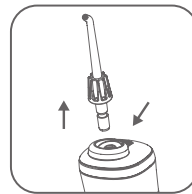
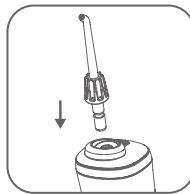
## OPERATION INSTRUCTION



1. Check and make sure that your hands are dry before operate, then connect the appliance with power source.



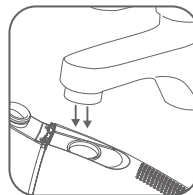
2. Insert the body into the charger, the charging indicator blinks and it will keep blinking during charging. When the water flosser is charged well, the charging indicator will light solidly. It takes about 24 hours to make the water flosser be charged fully.  
**NOTE:**The water flosser needs to be charged if the charging indicator blinks before or after operating.



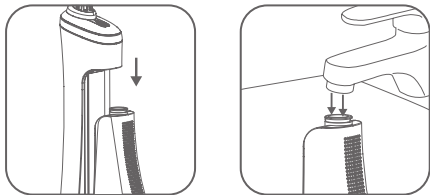
3. Remove the water flosser from the charger, then insert the nozzle into the body. And you can press the nozzle release button if need to remove the nozzle.

4. Load the water tank with water by following the two ways as below:

4.1 Open the water tank door and hold the water tank horizontally, then load the water tank with water, after it, close the water tank door.



4.2 Remove the water tank and hold it vertically, then load it with water, after it, replace the water tank well in position.



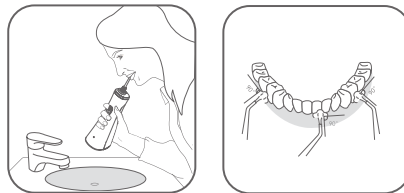
5. Select your required mode by the “Mode button”, there are three modes including “Normal”, “Soft” and “Pulse” for selection (see below). And you can press the “Mode button” to make switch between modes during operating.

A. Normal: For the normal cleaning of teeth.

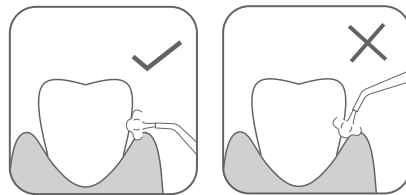
B. Soft: For the sensitive teeth and the user who uses the water flosser for the first time or only needs soft operation.

C. Pulse: For massaging gums to promote blood circulation and strengthen the teeth.

**NOTE:** If you use this water flosser for the first time, please choose the soft mode for a week, when you adapt to it, you can use the other mode you like.



6. Hold the water flosser vertically and then insert the nozzle into the mouth and aim at gums or teeth, at the same time, slightly open your mouth to let the water flow out smoothly.



7. Turn on the switch to activate the water flosser. The followings shall be paid attention to during operation.

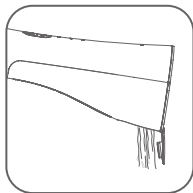
A. The water shall flow out in a direction vertical to gums or teeth.

B. Slowly move the water flosser along the teeth and clean them in order. Do not spray water along the periodontal pocket directly.

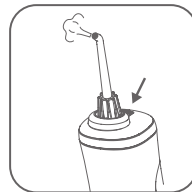
8. After operation, press the switch to turn off the appliance. And the appliance will shut off automatically after operating for 2 minutes. Please press the switch again if need to continue operating.

9. After finish operating, you can follow the operation as below to remove the residual water:

A. Open the water tank door and empty the water tank.

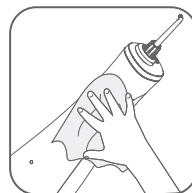


B. Press the switch, the water flosser starts working to drain out the residual water inside automatically.



C. Press the switch again to turn off the water flosser, and then close the water tank door.

D. Wipe the water flosser with dry cloth.



**NOTE:** The water flosser shall be free of residual water to avoid bacterial infection. Therefore, if it is not used for a long time, please clean the water flosser well, then dry and store it.



## TROUBLESHOOTING

Problem	Possible cause	Solution
The water flosser can not work.	The water flosser is used for the first time or it has been not used for more than 3 months.	Please charge the water flosser for above 24 hours.
Water pressure is low when working.	There is something blocked in the nozzle. The nozzle is deformed.	Replace the nozzle
The water flosser can only be operated for short time after being charged fully.	The filter is blocked.	Clean the filter
	The life of battery ends.	Please contact service department
	The water flosser has not charged well.	Please charge the water flosser for more than 24 hours before operation.
The charging indicator does not illuminate when charging.	The power plug has not been connected well.	Please connect the power source well.
	Circuit malfunction	Please contact service department

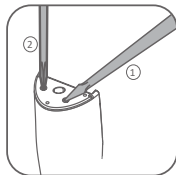
## WASTE DISPOSAL

The water flosser adopts recyclable rechargeable battery. When the life of water flosser ends, remove the battery and then recycle or dispose it basing on the local waste disposal regulation. Please consult the local waste disposal authority if you have any questions.

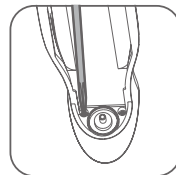
## DETACH RECHARGEABLE BATTERY

Do not dismantle the water flosser unless it needs to be discarded, or it will be damaged. Please unplug the appliance before remove the battery.

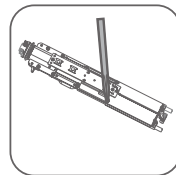
1. Make sure that the battery has been exhausted before remove it. To run out the battery, press the switch to activate the water flosser and make it run until it stops working automatically. Repeat operating for several times until the battery exhausts.
2. Remove the water tank and then unscrew the two screws at the bottom cover with a Phillips screwdriver.



3. Remove the two screws at the top cover with a Phillips screwdriver, then detach the top cover and remove the unit core.
4. Unscrew the screws at the bracket of unit core with a Phillips screwdriver.

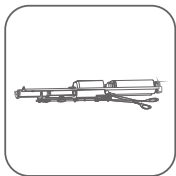


5. Shear off the connecting wire of battery with scissors, then remove the battery.



6. Recycle or dispose the battery correctly. And please consult the local waste disposal authority for the recycle of other components of water flosser.

**NOTE: Do not short-circuit the battery and never energize the water flosser again after remove the battery.**



## ENVIRONMENT FRIENDLY DISPOSAL

You can help protect the environment!

Please remember to respect the local regulations: hand in the non-working electrical equipments to an appropriate waste disposal center.





# decakila

---



decakila



Made in China Jiangsu China. 2021.D04

[www.decakila.com](http://www.decakila.com) Global Links Technology Co. Pte. Ltd.