

Brief Introduction

Product Name: WiFi Autogate Switch

Model Number: LT3X

The LT3X uses your existing home WIFI network(2.4GHz) to provide wireless control of your autogate system from anywhere in the world.

No Subscription or Hub is required:

1. Simply install the LT3X and start controlling your autogate system from your phone or tablet. Using the free **【WiFi Smart Control】** App, you can Open/Close your autogate.
2. The LT3X also functions like a normal switch:
Just press the button on it then you can control your autogate Open/Close easily.



LT3X



Phone App

Features

1. Works on all brands of gate opener systems:

AC 90-240V(50/60HZ) and
DC 9-30V are both available.

2. It can replace all access controls,
remote controls and wall switches.

◆ Just put the remote control in your
phone! Never worrying to carry your
remote control every day or lose it!



PANEL 877 SWING



PANEL 03SPS



PANEL SL2000



PANEL G18



PANEL G10



PANEL SG911



PANEL SB2000



PANEL SO-5010A/5020



PANEL 867



PANEL 866



1-TO-3-PROTON-1108-B-SMALL-TYPE-



1-TO-3-PROTON-1108-B-



1-TO-3-LH-D



1-TO-3-LB-D



1-TO-3-PROTON-1108-D



BRENORIAL-SWING-MOTOR-SET



BRENORIAL-328-WALL-GATE-SET



GT-DC-24V-SLIDING-SET



CELMER-AC-SLIDING-SET



SWING-ARM-3

SWING ARM MOTOR , AC SLIDING MOTOR , DC SLIDING MOTOR
UNDERGROUND MOTOR , WALL GATE MOTOR

Features

3. You don't have to roll down the window or get out of the car to open the door.
4. No hub required, just keep the LT3X inside of the wifi range. Control gate anytime, anywhere.
5. Perfect for all gate types including AC/DC sliding door, swing door, rolling door, garage door, automatic door etc.

This LT3X can be also used as a traditional wall touch switch.



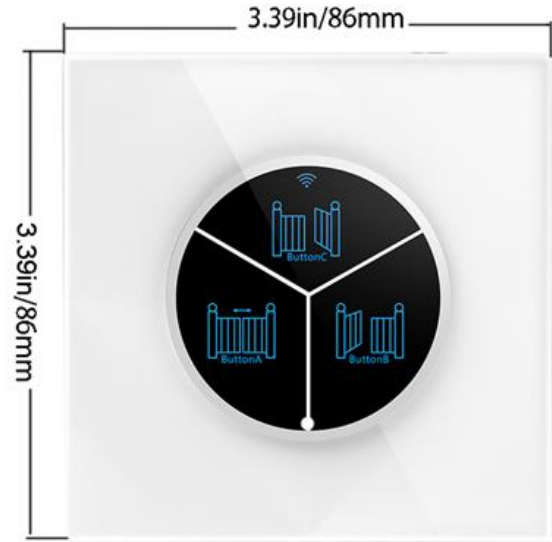
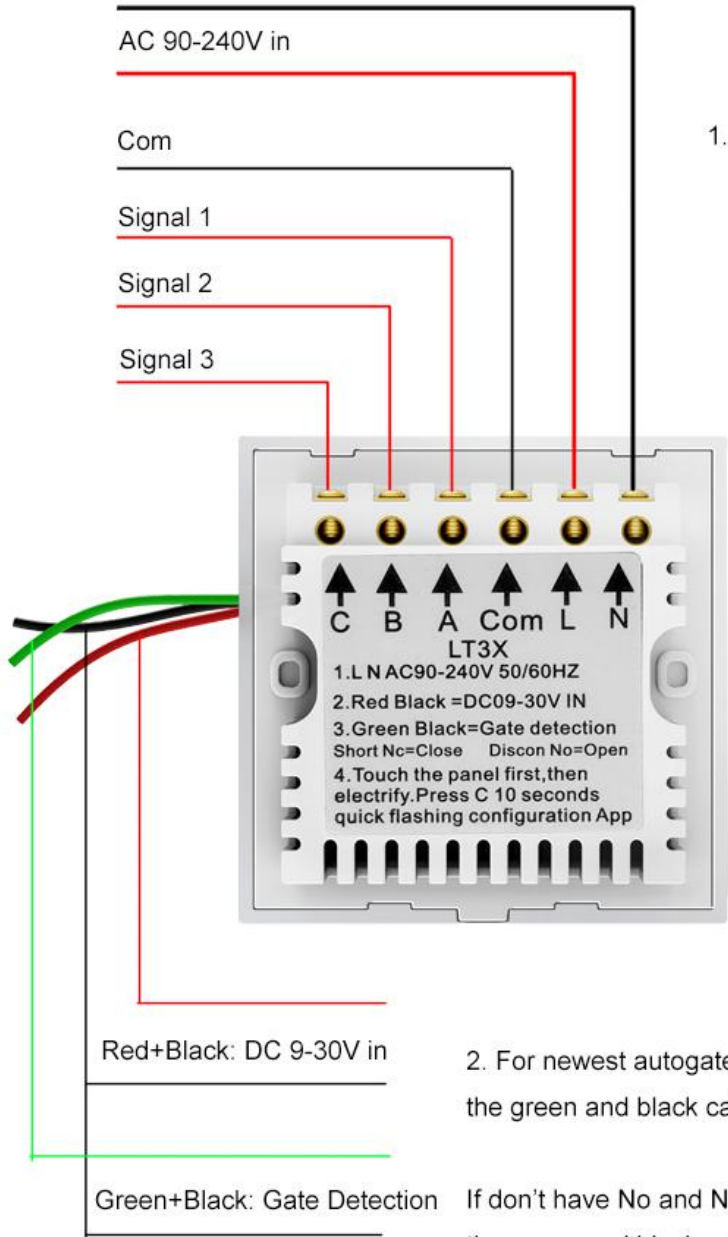
WIFI Router
(internet access)



All you have to do is to keep
the switch inside of WIFI range

Connection

1. Support DC(9-30V) and AC(90-240V), if DC and AC both are connected, the default power supply is AC.



2. For newest autogate control system which has No and Nc signal: connect the green and black cable directly;

If don't have No and Nc signal, then you can buy a magnetic contact to connect the green and black cable. (As shown in the picture on the right.)

Then you can see the door is open/close on mobile.



1. Power Connection:

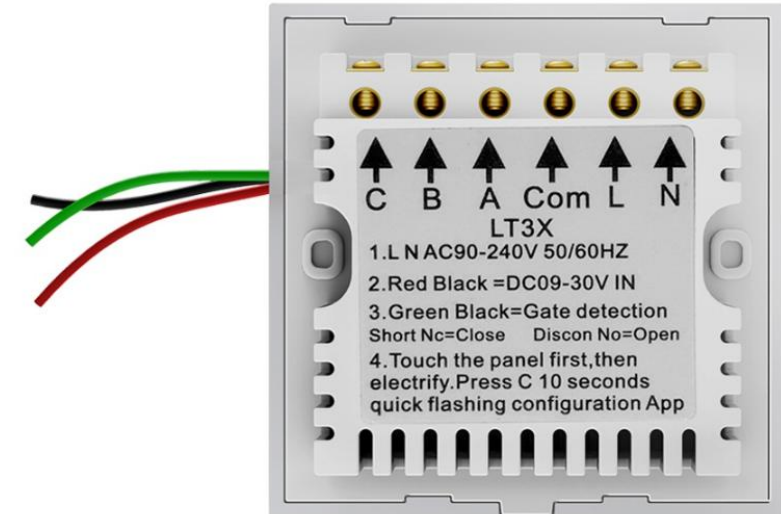
- ①AC: connect the LT3X L&N terminal to your AC power.
- ②DC: connect the LT3X red&black wire to your DC power.

2. Signal Terminal Connection:

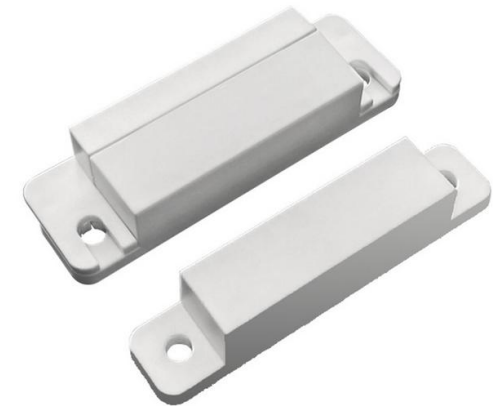
- ◆Have push button/keypad: connect the LT3X A/B/C/Com terminal to your push button/keypad wiring.
- ◆Don't have push button/keypad: connect the LT3X A/B/C/Com terminal to the gate opener control board.

3. Gate Detection:

Connect the LT3X green and black wire to a door sensor, then you can see door open/close status on mobile APP.



LT3X



Door Sensor

If your auto gate control system only need one signal(for example, only need open signal), then you just need to connect with one way, or you can connect with 3 way, then whichever button you press, it can send a control signal.

Can modify the device/button name on APP.



If your auto gate control system only need two signals(for example, only need open and close signal), then you just need to connect with two way, then the connected 2 buttons can send 2 control signals.

Can modify the device/button name on APP.



If you're connecting the LT3X to garage door/rolling gate/dual swing door, then you'll need to connect all the 3 ways to send 3 signals. You can connect the open/close/stop or left/right/dual door signal orders by yourself.

Can modify the device/button name on APP.



How to connect LT3X to mobile

1. Install the LT3X as a traditional light switch and connect to gate opener control board.
2. Download the free WiFi Smart Control App(or Smart Life APP) to your phone or tablet.
3. Use your phone number or email to register an account.
4. Click "+" on APP top right corner.
5. Press "Button C" on the LT3X for around 10 seconds, till the wifi indicator turns into blue and flashing quickly, then click "Confirm indicator rapidly blink" on mobile, then enter the WIFI password and confirm, waiting for connecting.
6. Add completed, you can change the device name and share with families.

If the connection fails, please press the C button of LT3X again for 10 seconds, wait for the WIFI indicator flashes again, and then reconnect to the WIFI.

Video For Reference: <https://youtu.be/ylAhhMtJpeA>

<https://youtu.be/R8BOqzkPAgU>

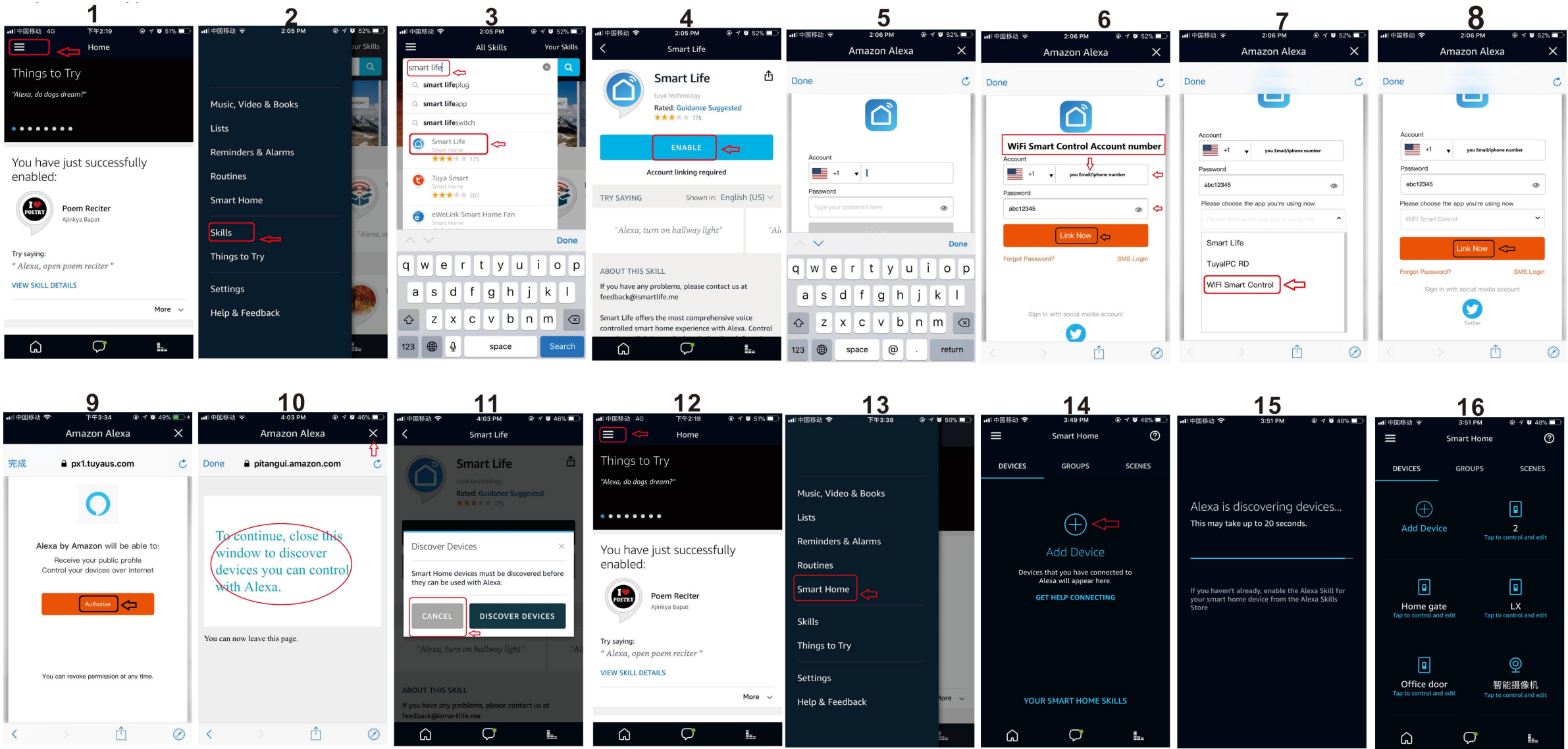
Note:

If you don't know how to connect the LT3X to your gate opener control board, please contact with us.

LT3X and smartphone must be under the same 2.4GHz Wi-Fi channel when adding device. After successfully adding, LT3X can be controlled via mobile network(2G/3G/4G network and WIFI).

How to connect LT3X to Alexa

*On condition that your Echo/Echo dot was connected to the internet.



Step 7 and 8 may not appear, just ignore it, video for reference: <https://youtu.be/n03wx3fR1g>

FAQ

Please note when adding device(LT3X):

1. Confirm LT3X is powered on.
2. Confirm LT3X is waiting for network configuration.
3. Confirm that LT3X, smartphone and router are as close to each other.
4. Make sure the network function of router and smartphone are unblocked.
5. Confirm the entered router password is correct.
6. Confirm adding device(LT3X) is under 2.4GHz WiFi channel. Enable the broadcast and not allow to hide Wi-Fi.
7. Confirm that router's encryption method is WPA2-PSK and authentication type is AES, or both are set up as automatic OWPA2-PSK 11n only.
8. Confirm that Wi-Fi name only contains letters.
9. If router's connected devices reach the amount limit. Please try to turn off some devices' wifi function and configure again.
10. If router enables MAC address filter, please try removing the device from MAC filter list and make sure router is allowing device to be connected.

APP Advantages

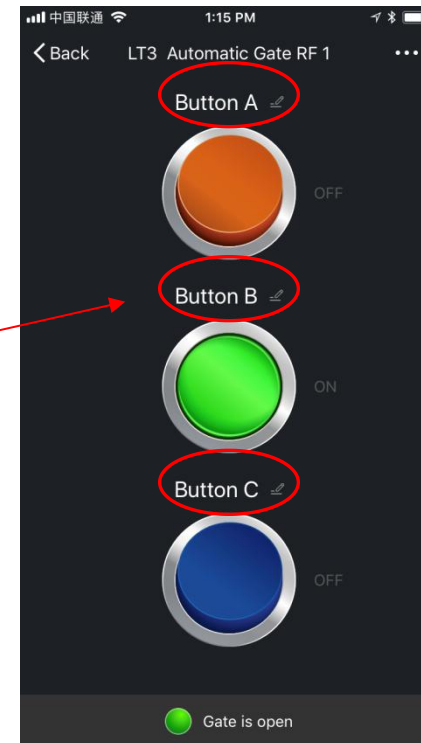
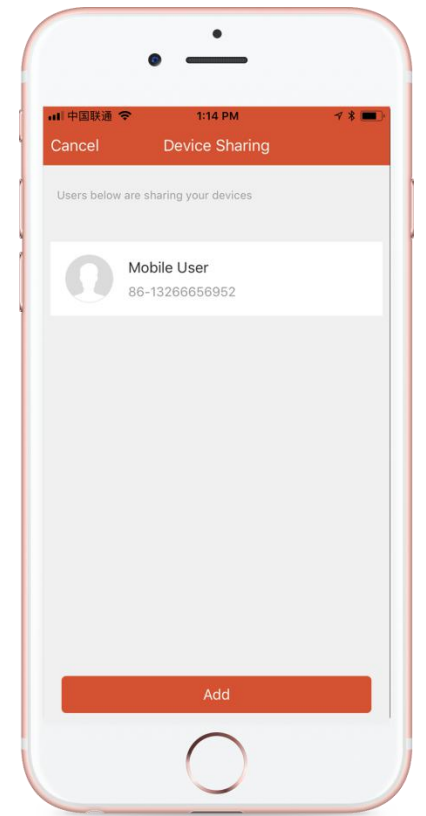
Share with families: you could authorize multiple individuals to access your garage through APP after you connected to LT3X. You can control both yours and theirs account as well.

Only the main account can share the device, the one who is shared device access can't share to others. What's more, the main account can delete the one who was once shared with the LT3X.

Control the LT3X through Echo, support commands:

1. Alexa, turn on Button A(or Button B/Button C).
2. Alexa, open Button A(or Button B/Button C) on.

You can modify the button name, then you need to say the name you modified to Alexa.



LT3X Advantages

If the LT3X is powered off, mobile can't control it. While once powered on, it can be used as usual, don't need to connect to mobile and set again.

The chip of the LT3X has memory function, even the device name was deleted on your APP or the router was rebooted, you only need to reconnect the LT3X with WiFi/APP, you don't need to modify the switch/button name, it's the same with you set before.

Eker Electronics Trade Limited
Eker International Trade Holdings Co., Limited

Contact person: Alice Ding
Tel: 86 0755 2774 5920
Email: alice@ekerele.com
Wechat: 86 13717353683

Website: www.ekerele.com
Alibaba Shop Website: www.ekerele.en.alibaba.com