

# AROMA DIFFUSER

## PRODUCT MANUAL

**Before using product, please read this instructions carefully and safe-keeping.**

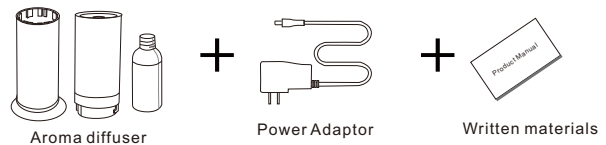
- Don't use the overladen Power socket, power wire and broken power wire plugs;
- Don't try to open the product, If happen abnormal phenomenon, Please contact with the relevant Technical department;
- If lightning and thunder, please do not touch the power supply cable.

### BASIC PARAMETERS

1

Model	
Dimensions	278*83mm
Upply Voltage	DC12V
Total Power	6W
Coverage Area	60m <sup>2</sup>

### INSPECTION EQUIPMENT

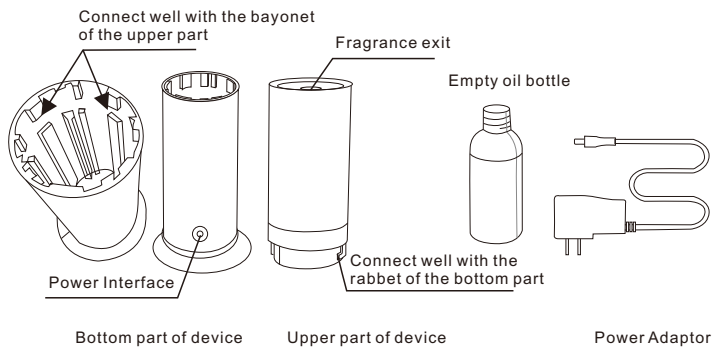


Checking and make sure the packaging is complete when you first open it, (it includes machine, fragrance bottle, power cord, manual) if any problem please contact with us soon.

### METHOD OF USE

2

1. Open the packaging and take out the equipment



### METHOD OF USE

3

Figure 1

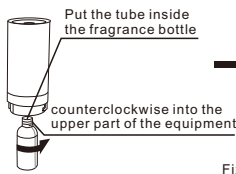
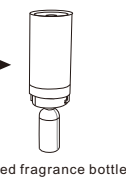


Figure 2



2. Open fragrance bottle cap, then keep Vertical-horizontal rotate it install into the upper part of the device where thread on connection. (Note: Pay more attention on it when install fragrance bottle, to prevent fragrance overflow)

3. Take the upper part of the device (after install fragrance bottle) and aligned well with the bottom part's bayonet and rabbet, then Forced under pressure, and then clockwise clamping.

Figure 3

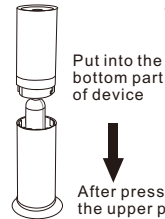


Figure 4

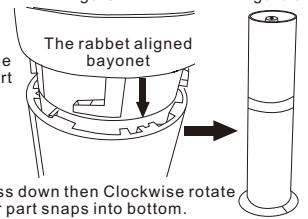
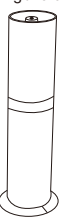


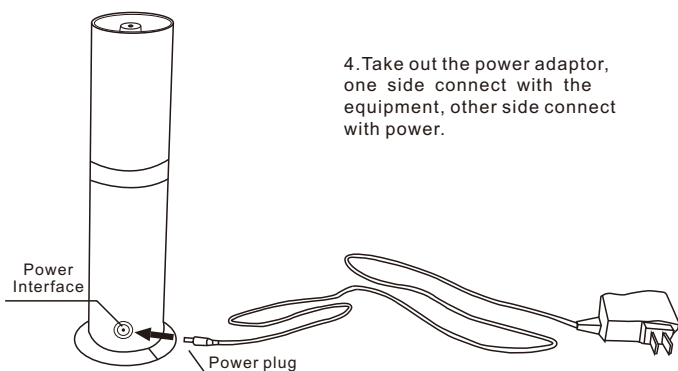
Figure 5



### METHOD OF USE

4

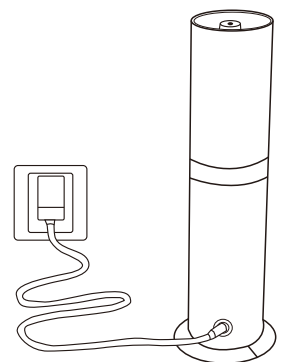
4. Take out the power adaptor, one side connect with the equipment, other side connect with power.



### METHOD OF USE

5

5. Connecting the power, when the indicator turns green, equipment starts to work.



## Using Steps

6

### 1 Add Aroma Oil:

Holding the upper and lower parts of machine with your hands, rotating counterclockwise to separate the bottle and machine, remove the bottle and put into suitable amount oil in it, then put the bottle to machine, tighten the upper and lower parts of the diffuser according to indicated position.

### 2 Connect power adapter:

Connect the power adapter to the lower power access point [DC POWER IN], put the plug into the power outlet.

### 3 Control Instructions:

There are 3 colors of LED light:  
Blue light is power on indicator  
Green light is working indicator  
Red light, press any button of remote control, green light turns into red color.

## Remote Control Setting

7



press this key to turn on & turn off the machine



(AROMA): In working condition, press this key to come back to the initial mode---Maximum spray volume, working all the time, This button is also worked as RESET



(DENSITY +): In working condition, press this key, every time increases 10% aroma density, 8 levels in total---press ten times to reach the maximum density.



(DENSITY -): In working condition, press this key, every time decreases 10% aroma density, 8 levels in total---press ten times to reach the minimum density.



(30/30s): In working condition, press this key to work for 30 seconds and pause 30 seconds.

## Remote Control Setting

8

30/60s

(30/60s): In power-on condition, press this key to work for 30 seconds and pause 60 seconds.

30/120s

(30/120s): In power-on condition, press this key to work for 30 seconds and pause 120 seconds.

### 4 Remote control working time

1h

(1h): In power-on condition, press this key to work for 1 hour continuously per day, other time is no working.

4h

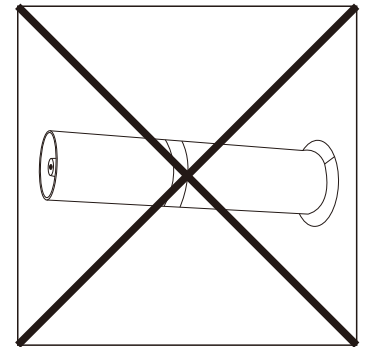
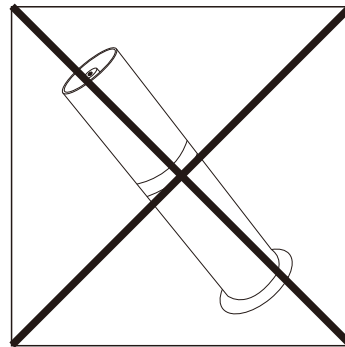
(4h): In power-on condition, press this key to work for 4 hours continuously per day, other time is no working.

8h

(8h): In power-on condition, press this key to work for 8 hours continuously per day, other time is no working.

## NOTE

9



After fragrance bottle installed ( with fragrance in it ), please keep the machine vertical, don't tilt or put down, to avoid the fragrance overflow, which will contaminated equipment circuit, affecting the normal use and unnecessary waste.

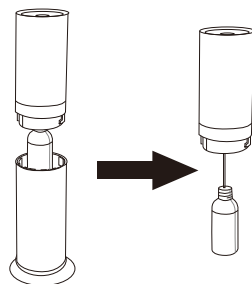
## EQUIPMENT CLEANING

10

Every time when make a replacement of fragrance or after some time operations, the fragrances smoke come out from the nebulizer are less than before, we need to do a cleaning and maintenance.

### Cleaning steps:

Carefully open the equipment and take out the fragrance bottle, which the fragrances have been run out.



## EQUIPMENT CLEANING

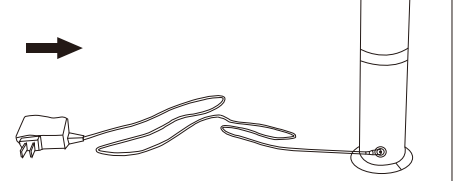
11

Put some alcohol into the bottle again, then install it on the equipment, and then turn on the equipment let it work for 5-10 minutes.

Put some alcohol in it



Alcohol

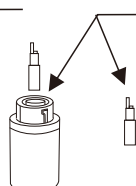
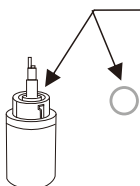


## SPARE PARTS REPLACEMENT

12

When you refill oil, please check whether the O-ring is damaged. If it was damaged, replace it with extra O-ring.

When the unit does not diffuse any smoke or diffuse small smoke, replace the atomizer with new one.



## EQUIPMENT CLEANING

- After cleaning, turn off the equipment.
- Take out the fragrance bottle again, and make a replacement of fragrance that you like, finally install on the machine carefully.

## COMMON FAULTS AND EXCLUSION

13

FAULTS	EXCLUSION
Do Not Spray	Check The Power Is On Or Off, Pump Damaged
Little Smoke Out	Atomizing head is blocked, Cleaning equipment to confirm, Pump is aging
Spray Liquid	The Device Is Tilted, Spray Head Is Damaged
Perfume spill	Bottle Is Loose
Abnormal Sound	Pump Is Loose