

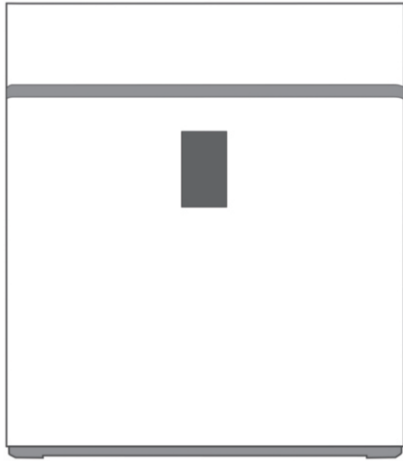
SnowPad Instruction Manual

Please read this instruction manual carefully before using the product and keep it properly.

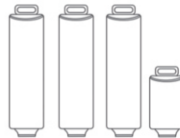
Catalogue

Product and Accessories	1
Functional Schematic Diagram	2
Installation Instruction	3
Cartridge Replacement and Reminder	4
Trouble Shooting	6
Precautions for Use	7
Technical Specifications and Water Treatment Process Flow Diagram	8

Product and Accessories



Main Body



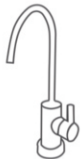
Four Filter Cartridges

Includes spun PP filter(PP), block carbon filter(CTO), reverse osmosis membrane(RO) and post activated carbon filter(T-33).

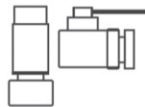


One Accessory Box

Includes faucet, 3-way ball valve, three pipes, instruction book, adapter and drain clamp. Reference Images for Accessories



Goose faucet



3-way ball valve



3 pipes
(red, blue and white)



Instruction book



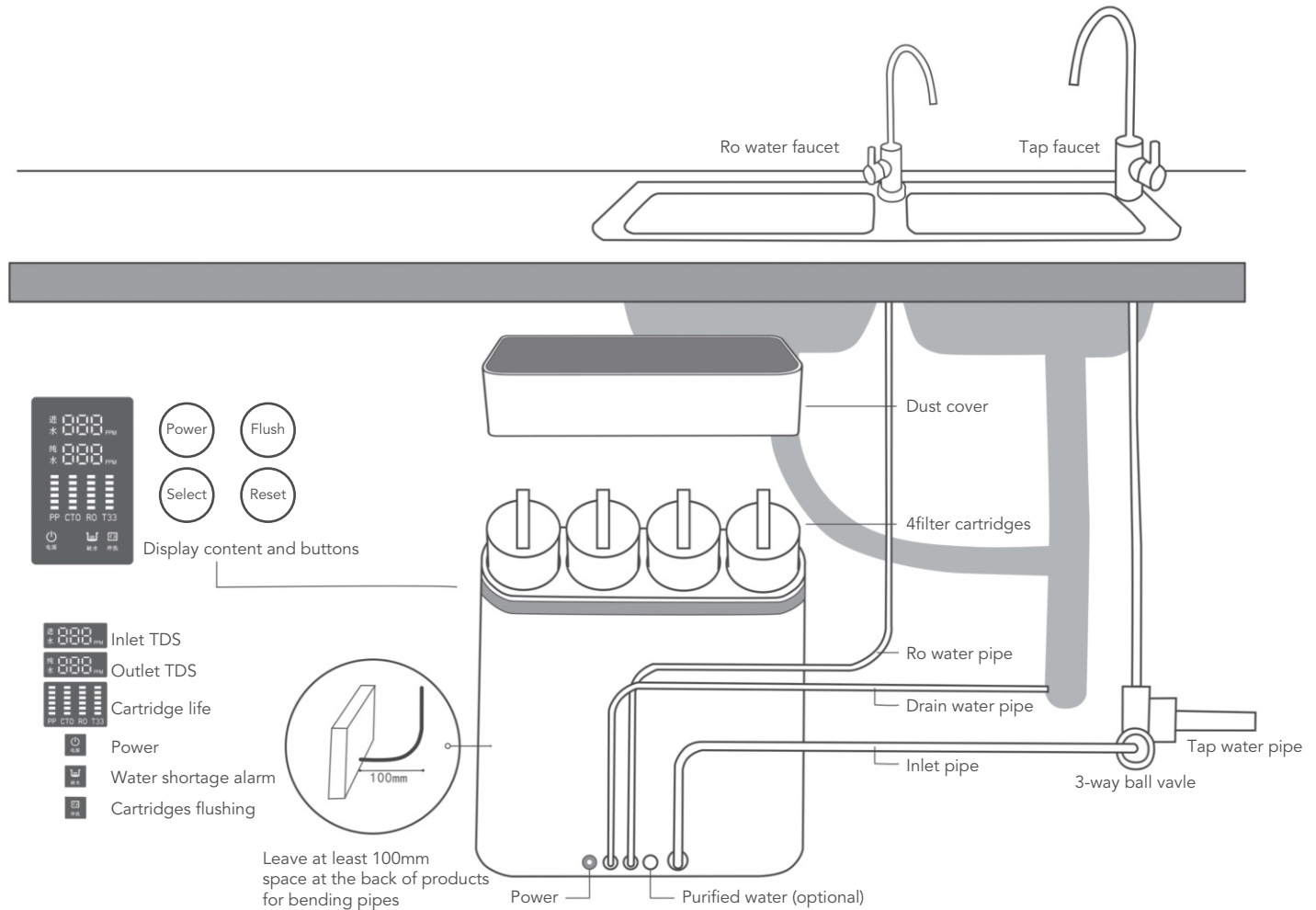
Adapter



Drain clamp

Note: Pictures are for reference only, subject to our available products.

Functional Schematic Diagram

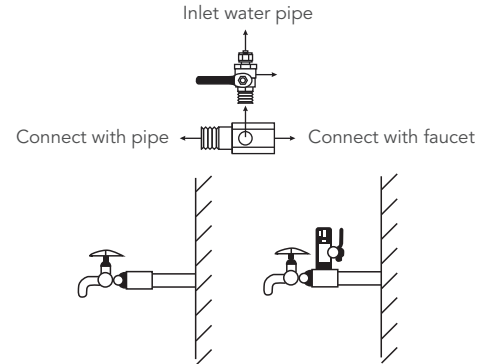


Installation Instruction

Installation for Inlet Ball Valve and Tee Fittings

Install Tee Fitting and Feed Water Valve as per diagram.
Wrap threads of Feed Water Valve and Tee Fitting with Teflon tape.
Connect White Feed Water Tubing from unit to Feed Water Valve.
Install the Feed water valve Tee fitting,
and then connect to source water.
The water supply to your unit.

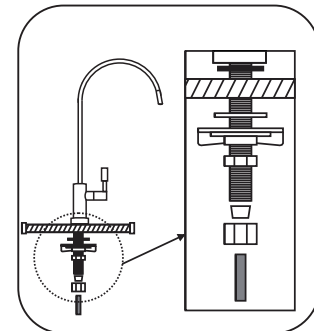
NOTE: cold potable water Use only a supply as Feed Water, hot water will damage your unit. Softened Feed Water will extend the life of the RO Membrane



Installation for Goose Faucet

Select a convenient location near your sink to place the faucet.
Drill a hole 12mm in diameter in counter top.
Place washers, plates, seals and nuts in order as per diagram and tighten on to counter
Select a convenient location near your sink to place the faucet.
Drill a hole 12mm in diameter in counter top.
Place washers, plates, seals and nuts in order as per diagram and tighten on to counter.
Attach Blue Pure Water tubing to the bottom of faucet and connect tubing to unit.

CAUTION: Check that tubing is connected correctly according to Connection Diagram at beginning of section

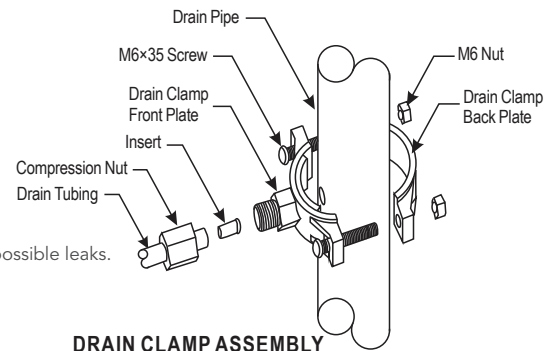


Installation for Drain Clamp

Place drain clamp on drain pipe above the drain trap and tighten securely.
Using the drain clamp as a guide, drill a 6mm hole, enough for the 1/4" tubing to pass through one side of the drain pipe. DO NOT drill through both sides.
Connect from unit to Drain Clamp.

CAUTION:

When cutting the tubing, make it clean, square. cuts failing to do so result in poor connection and possible leaks.
The lowest point of the line should be the point of connection to the Drain Clamp.
There should be no sag in the line which may cause noise when reject water flows.



First Use Instruction

1. Connect Ro system with adapter, then the power indicator light is on, buzzer rings three times, machine flushes for 90 seconds and flushing icon flashes .
2. Ro system begins making water and on board computer shows real-time display of TDS, cartridge life span and power indicator light. All icons extinguish when water tank is full.
3. Water storage icon flashes and buzzer rings 10 times while being insufficient water or low water pressure and machine flushes for 5 seconds after having enough water or water pressure.
4. Machine stops making water and issues an alert, all icons flash up, buzzer rings 30 times after being working continuously for 6 hours or water leakage is detected.

Note: Under normal operation, please draw off water for 10-15 minutes for cartridges flush when it's first use.

Cartridges Replacement

Cartridge reminder



There are 6 cubes to show the current lifespan of corresponding cartridge filter. All cubes extinguish when filter's lifespan is over.

Note:

1. Actual lifespan of filters can be influenced by areas, water quality, seasons and daily water consumption, so the period of filters replacement may vary.
2. Please replace regularly.

Cartridges Reset

Keep pressing Select button for 3 seconds to enter selection mode, then press Select to select the cartridge which needs to be replaced and then press Reset button. The cube shows full again. And the selection mode will exit automatically if there is no operation in 5 seconds.

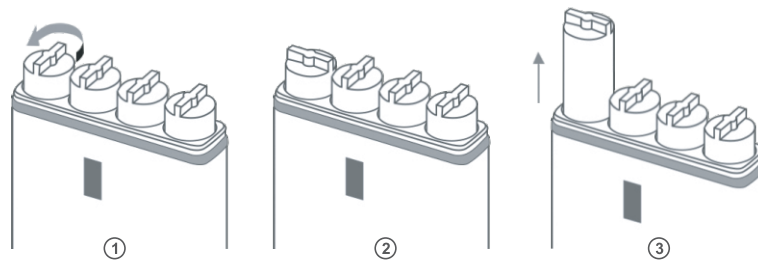
Recommended Replacement Period for Cartridges

STAGES	FILTER CARTRIDGE	FUNCTION	LIFESPAN (FOR REFERENCE ONLY)
The first stage	Spun PP filter	Removes larger suspended particles in water	3-6 months
The second stage	Block carbon filter	Furtler removes organics, chlorine, odor and turbidity	3-6 months
The third stage	RO membrane	Removes bacteria, heavy metals, dissolved matters and salinity	12-24 months
The fourth stage	Post Carbon filter	Adjusts the taste of purified water	3-6 months

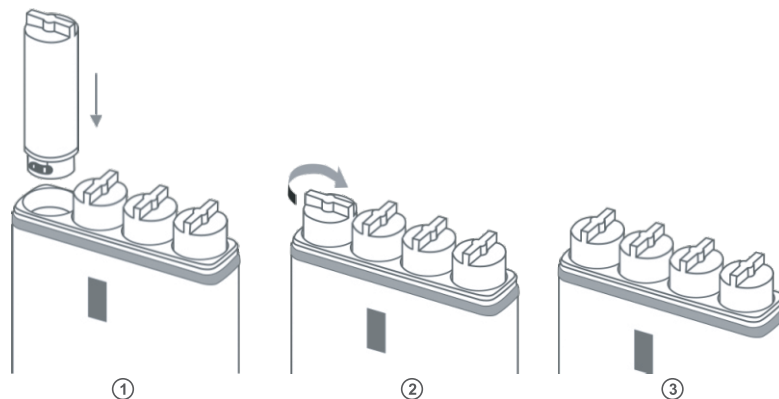
Please cut off the water and turn off the power before replacing cartridges.

1. Open the cap.

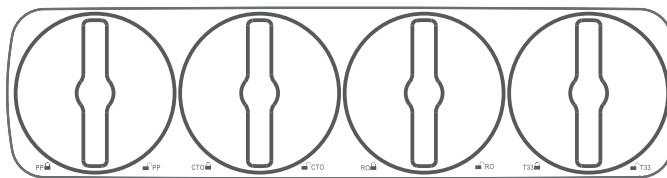
2. Hold the cartridge handle and rotate 90°counterclockwise, then pull it out.



3. Replace it with new cartridge and align the arrow label to "☐" and rotate 90°clockwise to "☐".



4. Cover the cap after finishing replacement.(The cap is unable to cover when cartridges are not in right place.)



Note: Please reset cartridges after replacement.

Trouble Shooting

Troubles	Cause	Solution
Water pump is out of service and system does not work	Insufficient feed water pressure	Increase feed water pressure
	No power or power failure	Power-on
	High pressure switch is out of order	Replace high pressure switch
	Pump is blocked and adapter fuse burn-out	Replace adaptor and repair water pump
High TDS value	TDS of feed water is too high or system is placed long term being unused.	Open the faucet to draw off the pure water for a while
	Cartridge lifespan is over	Replace cartridge
Water pump works but system does not work	1.RO membrane is blocked. 2.water pump pressure loss	1.Replace RO membrane. 2.repair water pump
	3.Flush solenoid valve is damaged	3.Replace flush solenoid valve
Constantly running water in downtime	Inlet water solenoid valve damaged	Replace feed water solenoid valve
Cannot stop working when pressure tank is full or repetitive starting	High pressure switch is damaged	Repair or replace high pressure switch
	Check valve is damaged	Replace Check valve

Precautions for Use

Attention

1. Wash and replace cartridges regularly.
2. Do not disassemble parts randomly which may cause leakage or damage.
3. Do not use power supply with disproportional rated voltage.
4. Please pull the power plug and cut off the feed water valve if long term storage.
5. Do not store or explore in an environment of 0 °C or below.
6. Handle with care when discharging, moving and installing.

Remind

1. Please turn off the feed water ball valve and cut off the source water to avoid the “water hammer phenomenon” which may lead to leakage or damage to housings and filters if go out in daytime or after the last use at night. Our company would not take the responsibility of the consequence caused by this situation.
2. Please cut off power and source water at once in case troubles occur and ask professional staff to repair.
3. Professional staff are advised to replace cartridges.
4. It is normal to hear vibration sound when system is producing water.

Note: Water hammer is a pressure surge or wave caused when water in motion is forced to stop or change direction suddenly. When resident in building close his valve suddenly, a pressure wave propagates in the pipeline of building.

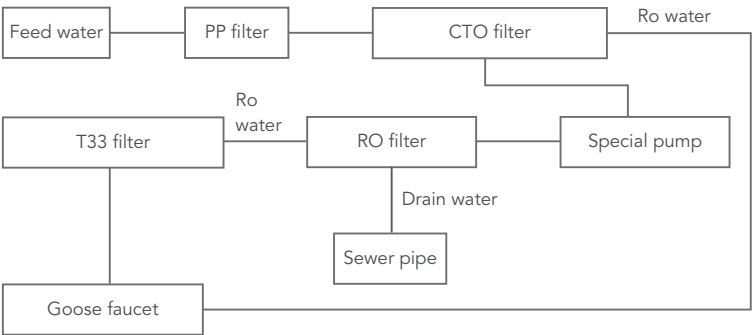
Technical Specifications and Water Treatment Process Flow Diagram

Technical Specifications

Feed water quality: Municipal tap water
Voltage and frequency: 100~240V, 50/60Hz
Power input:96W
Purified water flow: 1.2L/Min
Feed water temperature: 5~45 °C
Feed-water TDS: ≤ 250ppm
Feed-water Chlorine level: ≤ 0.2ppm
Rejection: 90~99%
Feed-water pressure: 0.1~0.4 Mpa
Electric shock resistance: type II

Water Treatment Process Flow Diagram

Technological process



Diagram

