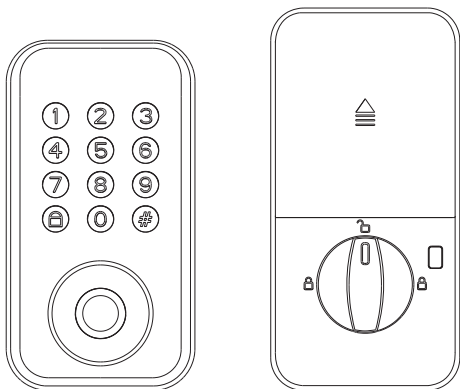


INSTRUCTION MANUAL



TT LOCK

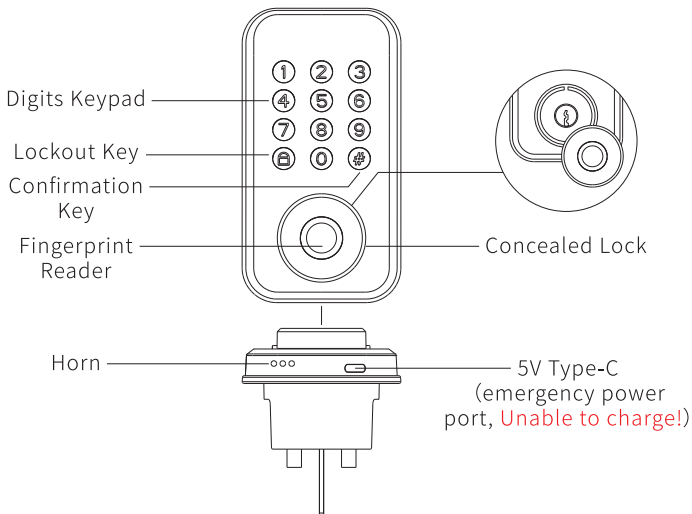
Before installing the smart lock,
please read this manual carefully,
and keep it in a safe place, for future reference.

TABLE OF CONTENTS

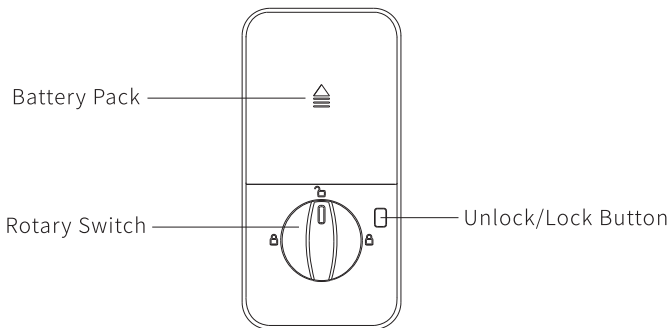
PRODUCT OVERVIEW.....	01
DOOR LOCK SCHEMATIC.....	02
DOOR LOCK INSTALLATION TUTORIAL.....	03
1、Measure The Door Size.....	03
2、Mounting Latch Strike Plate And Strike Plate Box.....	03
3、Adjustment Latch.....	04
4、Installation Of Latch.....	05
5、Installation Of Door Locks.....	06
USE OF DOOR LOCKS.....	09
1、Outdoor Unlocking And Locking.....	09
2、Interior Unlocking And Locking.....	10
3、How To Delete A User.....	11
4、Emergency Supply.....	12
5、Local Auxiliary Functions.....	13
USE OF TTLOCK.....	15
1、App Registration And Login.....	15
2、Add Bluetooth Door Lock.....	16
3、Bluetooth Door Lock Home.....	17
4、Fingerprint Management.....	18
5、Restore Factory Settings.....	19
PRODUCT TECHNICAL PARAMETERS.....	20

PRODUCT OVERVIEW

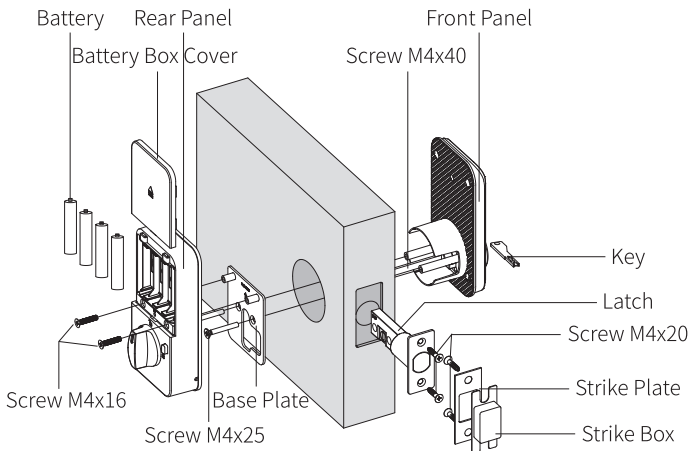
Front Panel



Rear Panel



DOOR LOCK SCHEMATIC



Tips ⚠️ (1) Pass the front panel through the 60/70 locking lee, The main line passes underneath the lockjaw.

(2) Remove the rear panel screws to take out the base plate, the front panel and the base plate are fixed with M4x30 screws.

Attachment



Front Panel
x1



Rear Panel
x1



Latch 60/70
x1



Latch Strike Plate
x1



Strike Plate Box
x1



Key
x2



Screw tube
M4x40(mm)
(Spare) x2



Open Hole Jam
x1



Screw
M4x25(mm)
x2



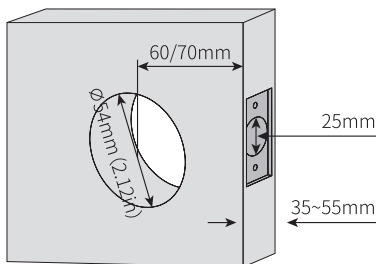
Mscrow
M4x20(mm)
x4

Tips ⚠️ Open the product package and check that the above accessories are included.

DOOR LOCK INSTALLATION TUTORIAL

1. Measure The Door Size

Make sure door thickness is 35mm-55mm, door hole diameter is $\Phi 54\text{mm}$, measure backset size is 60/70mm with the deadbolt.



Tips ⚠ (1) Applicable door thickness 35~55mm, if the door thickness exceeds this range, please contact us for more information. Please choose the right fittings according to your door thickness. (2) For 35-45 door thick, please use a 30mm nut, 45-55 door thick, please use 40mm nut.

2. Mounting Latch Strike Plate And Strike Plate Box

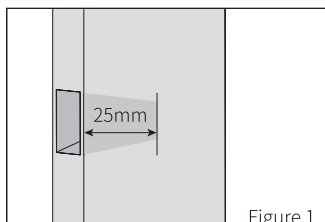


Figure 1

(1) As Figure 1:

The locking hole should be at least 25mm deep, allowing the locking mechanism to extend into the space.

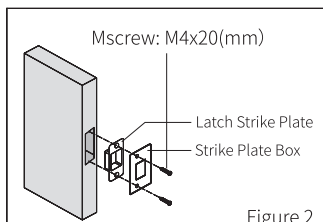


Figure 2

(2) As Figure 2:

Use 2 self-tapping screws to secure the snap box and snap plate to the door frame.

3. Adjustment Latch

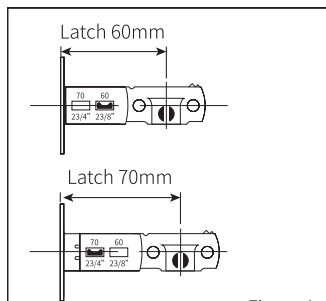


Figure 1

(1) As Figure 1:

According to the lock hole to choose or adjust the appropriate lock sharp size inch (factory default is 60mm).

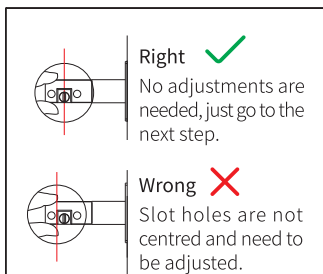


Figure 2

(2) As Figure 2:

Observe whether the locking slot hole is centred or not, adjust the position again if it is not centred.

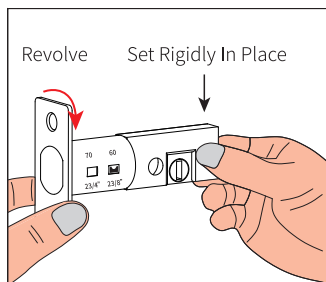


Figure 3

(3) As Figure 3:

To adjust the 70 mm locking device, secure the end of the device and then rotate the front of the device.

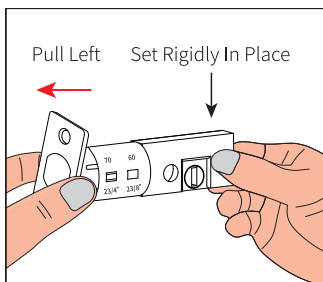
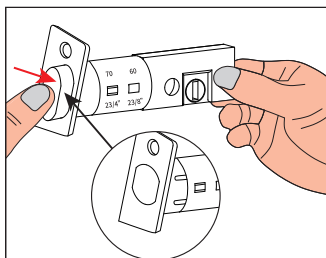


Figure 4

(4) As Figure 4:

At this point stretch the front end of the locking lee to the left to the end.

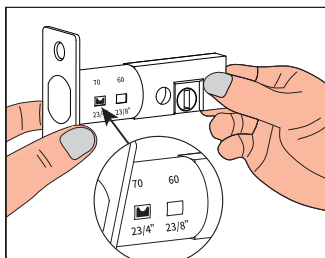


Correct State ✓

Figure 5

(5) As Figure 5:

When the lock is found to be dented during operation, press the lock fully in first.



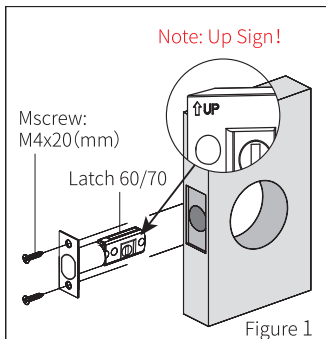
Adjustments completed!

Figure 6

(6) As Figure 6:

After the front of the locking lever is reset, the snap point is shown at the 70mm position.

4. Installation Of Latch



Note: Up Sign!

Mscrew:
M4x20(mm)

Latch 60/70

Figure 1

(1) As Figure 1:

Secure the locking lee to the door frame with two M4x20 screws.

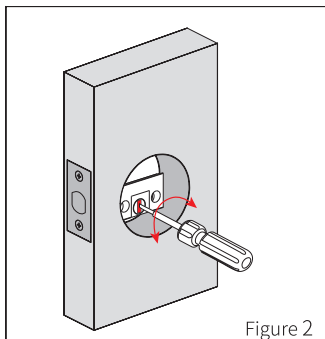


Figure 2

(2) As Figure 2:

Use a one screwdriver to check that the locking lee is smooth.

5. Installation Of Door Locks

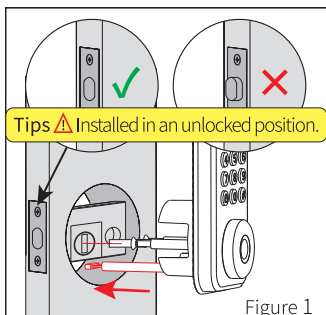


Figure 1

(1) As Figure 1:

Pass the front panel through the door hole (**note: the mains cable passes under the locking lee**).

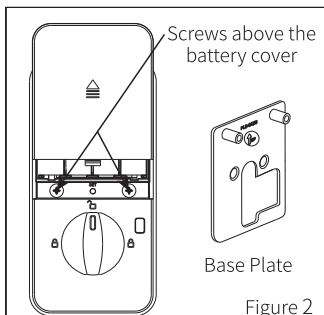


Figure 2

(2) As Figure 2:

Open the battery cover, remove the screws above the battery cover, and remove the mounting plate.

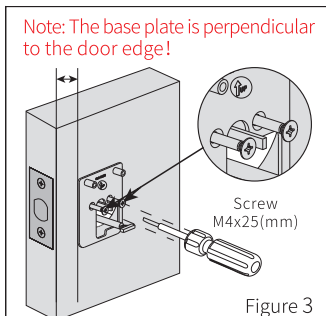


Figure 3

(3) As Figure 3:

Secure the base plate with screws (do not over tighten to prevent deformation of the locking mechanism).

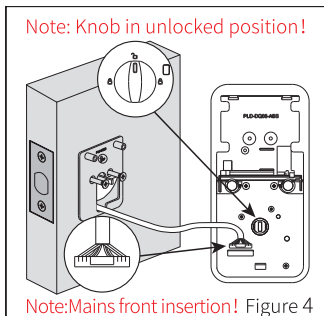


Figure 4

(4) As Figure 4:

The mains lead is inserted into the socket and pushed in until full contact is made (**Do not install batteries!**).

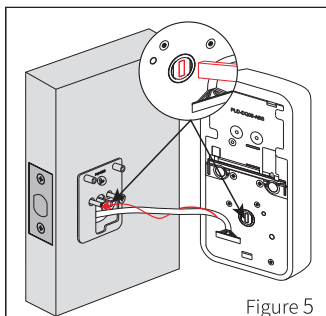


Figure 5

(5) As Figure 5:

Tuck the mains back into the door frame, align the rear panel with the Latch and fix to the door.

Note: Rear panel is perpendicular to the door edge!

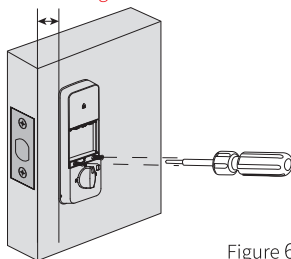
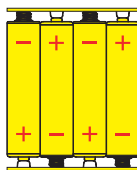
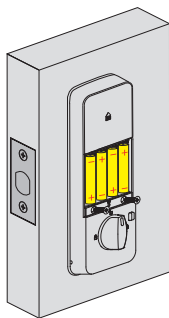


Figure 6

(6) As Figure 6:

Secure the two screws previously removed from the battery cover and tighten them.



Tips ⚠ Note the battery orientation!

Figure 7

(7) As Figure 7:

Installation is complete when the battery is installed and the battery cover is closed.

Check Points After Installatio⚠

- (1) Please be sure to install the batteries after the door lock is installed.
- (2) The door lock will automatically calibrate the motor to identify the direction of opening the door.
- (3) The rotating parts of the 60/70 locking lee must be able to rotate smoothly and flexibly.
- (4) Please choose high-quality LR06 alkaline batteries and make sure that the 4 batteries are brand new, and cover the battery cover.

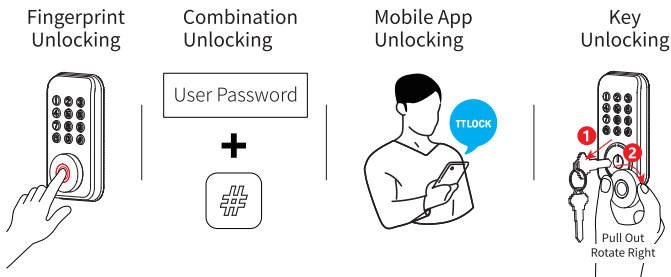
Tips⚠

- (1) This lock requires a mechanical key for manual unlocking, remove the mechanical key from the package and keep it in a safe place so that it can be used at any time.
- (2) When you hear the low voltage alarm, please replace the batteries immediately, do not mix new and old batteries or different types of batteries.
- (3) This lock is waterproof IP53, please pay attention to daily use and maintenance.
- (4) Keep your fingers clean and dry when using this lock.
- (5) When using the Bluetooth app on your mobile phone, please keep it within an effective distance of 5~10 metres.

USE OF DOOR LOCKS

1、Outdoor Unlocking And Locking

(1)、Unlocking From Outside

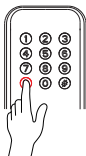



(2)、Locked From Outside

Auto Lock Off Mode

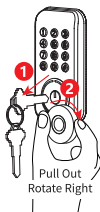
In Auto Lock mode,
5 seconds after unlocking,
The latch is
automatically extended.

Manual Mode



Press the panel
numeric buttons
to wake up the device,
then press .

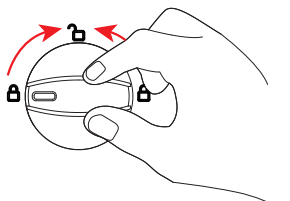
Key Mode



2、Interior Unlocking And Locking

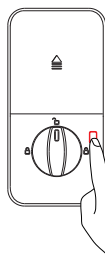
(1)、Unlocking From The Inside

Panel Unlocking



Turn knob to unlock position

Electronic Switch Buttons



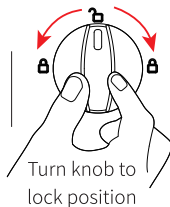
Press this button to open and close the lock.

(2)、Locked From Inside

Auto Lock Off Mode

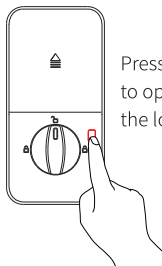
In Auto Lockout Mode, the unit will lock out automatically.

Manual Mode



Turn knob to lock position

Electronic Switch Buttons

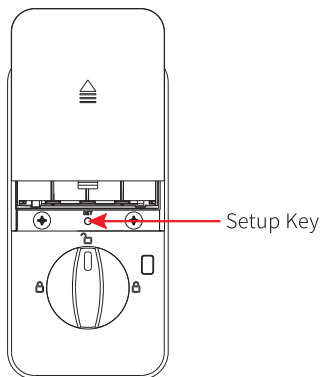
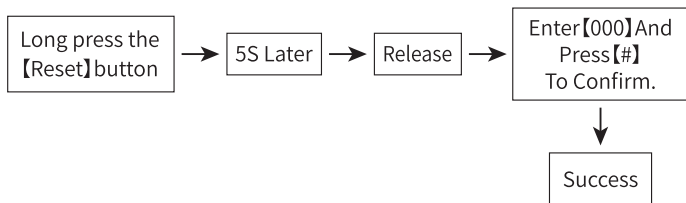


Press this button to open and close the lock.

3、How To Delete A User (Restore Factory Settings)

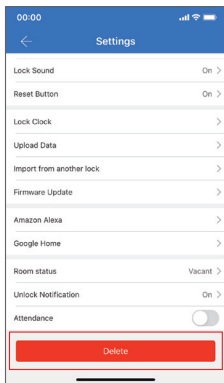
When the lock is reset, all user codes (fingerprints or passwords) are erased and all programmed functions are reset to factory settings and the app is automatically unbound.

Method 1:



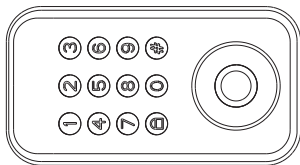
Method 2:

Via App (See P.19)



⚠ The mobile app and the door lock should remain connected.

4、Emergency Power Supply



In case of insufficient power, use the emergency power supply here (charging is not possible).

Tips **⚠**

- (1) Put at least one key outside the door, just in case.
- (2) When the battery is low, it can still be used approximately 100 times (the app will not be able to operate the device after a power cut).
- (3) When the battery is dead, you can use the key to unlock the door, and also you can supply power to the lock through the 5V Type-C USB.
- (4) Use alkaline batteries, to prevent the battery from leaking and causing damages, if you don't use it, please remove the battery.

5、Local Auxiliary Functions

(1)、Rryptographic

The initial password of the lock is【123456】, the first time you use it, please pair your lock in App, the first user can be fingerprint or password.

(2)、Automatic Locking

The lock is automatically switched off 5 seconds after unlocking, by default this function is switched off (You can customise between 5~60 seconds) .

(3)、Functions Of The Key

The key unlock function is always available when the battery runs out or the code is forgotten.

(4)、Input Error Limit

After 5 failed attempts to enter the code, the device will lock for 1 minute.

(5)、Silent Mode

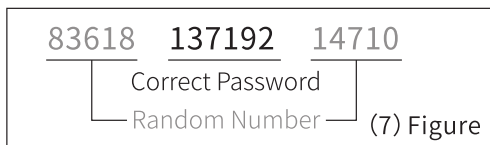
Pressing a button will emit a beep, and the voice can be muted.

(6)、Normally Open Mode

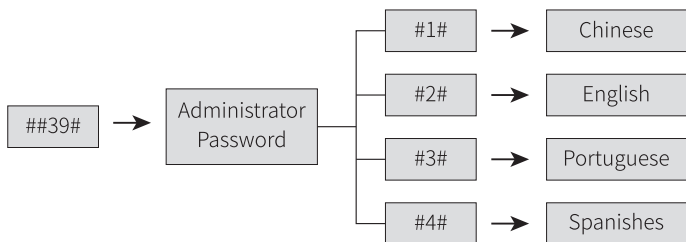
The device will remain unlocked when the normally open mode is enabled until the lock is manually switched off.

(7)、Unlocking With A Snoop-Proof Code

Users can enter a random number before or after the unlock code to prevent the unlock code from being exposed, the total length of the code is 16 digits (as shown in the figure below) .



(8) 、Language Selection



Tips

- (1) The first time you use the door lock, please bind the door lock in the App first.
- (2) When the APP adds the door lock, please make sure to press any number key to keep the door lock awake so that the mobile phone can find the door lock.
- (3) When using the mobile app, make sure Bluetooth is turned on in your phone and agree to the app's access to your phone's Bluetooth.

USE OF TTLOCK

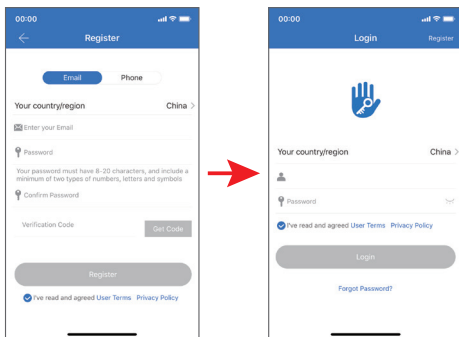


“TTLock” App is the intelligent management app provided by TTLock to end consumers. Through TTLock App, you can conveniently configure and control your whole –house intelligent products, configure your favorite scenarios and automation programs, share your intelligent devices with your family and friends, and enjoy the fun of whole –house intelligence.

Get the app: Search for “TTLock” in the Android App Market or Apple Store, or Scan the QR code above to download.

※This document takes Smart Life App as an example, and explains in detail the functions of App door lock panel.

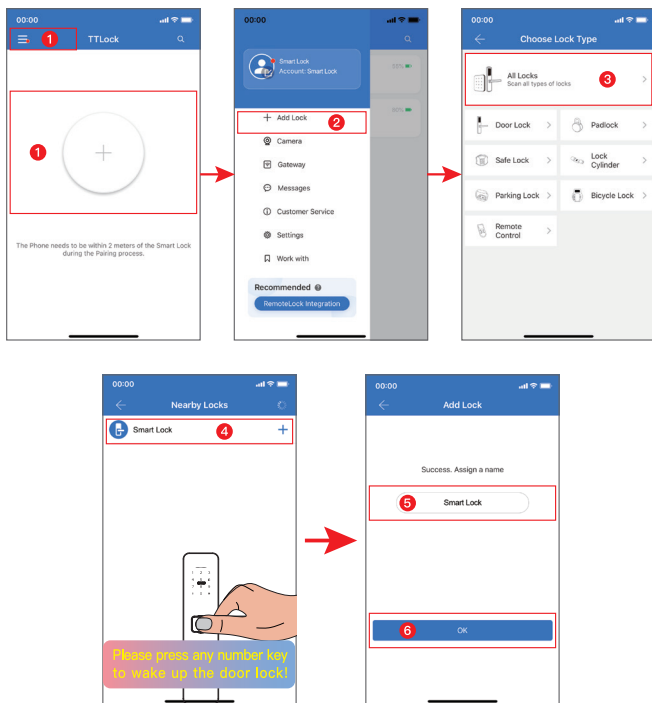
1、App Registration And Login



(1) No account: choose to register by cell phone SMS verification code or email.

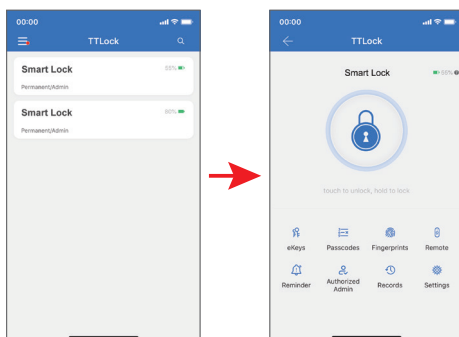
(2) Existing Account: Select a cell phone number or email and enter password to log in.

2、Add Bluetooth Door Locks (Bluetooth Must Be Enabled On Your Phone First)



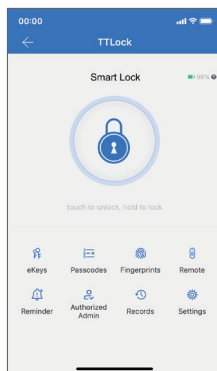
Click the **☰** icon in the center or **☰** icon in the upper left corner of the home page, Select **[+ Add Lock]** → **[All Locks]** screen, At this time, press any numeric key of the door lock to wake up the door lock, When the lock is recognized, click the **[+]** icon to add a lock, rename it or just click **[Confirm]** .When the lock beeps twice, it means it has been added successfully.

3、Bluetooth Door Lock Home



- (1) Click on the device list to go to the door lock home page (**this list is not displayed when only one door lock is connected**).
- (2) Press and hold the homepage **🔒** con to unlock the door from your phone, Press and hold again to close the door lock.
- (3) Please turn on the Bluetooth function of your cell phone when using, and keep the effective distance at 5~10 meters. If Bluetooth is not connected, the “Please turn on Bluetooth” will be displayed (**Bluetooth cannot be turned on through the App**).

4、Fingerprint Management

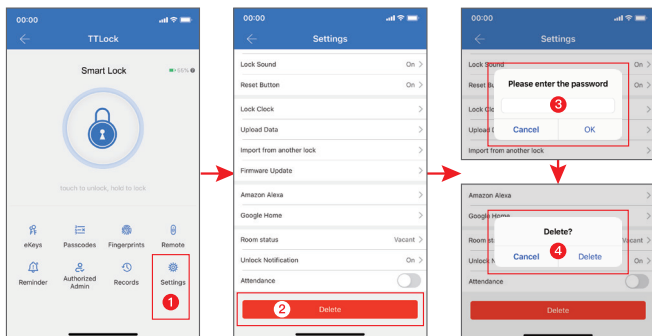


△ Complete entry of five fingerprint areas with 99.9% success rate!

- The belly of the finger is used to make the entry, not the fingertip.
- The same fingerprint needs to be scanned from multiple angles.
- Multiple fingerprints can be scanned for the same user.
- Please keep your finger clean, not too dry or too wet.


On the door lock homepage, select the secret key information to be entered according to your needs, and follow the prompts.

5、Restore Factory Settings



- (1) Click **Settings** on the door lock homepage, scroll down to the bottom and click **Delete**. Enter the account password to restore the factory settings (all data of the door lock will be erased).
- (2) See P.11 [Mandatory Initialization], Insert a pin into the setting button in the small hole of the rear handle, Press and hold for 5 seconds to hear a “tick” to force initialization. (All data on the door lock will be erased and restored to the default state when it was first shipped, and other users can re-add the door lock through the app).

PRODUCT TECHNICAL PARAMETERS

SN	Function	Content	Description
1	Unlocking Method	Fingerprints, Passwords TTLOCK App, Key	
2	Number Of Users	200 Pieces	Includes administrators and regular users
3	Print	100 Groups	Fingerprints need to be re-entered 5 times (please enter from multiple angles)
4	Cryptographic	100 Groups	Password needs to be entered 2 times【#】key to confirm (6-9 digit password, both times must be the same!)
5	Low Voltage Alarm	$4.8 \pm 0.2V$	When the voltage is lower than 4.8V, the red light blinks 5 times, prompting "the battery is low, please replace the battery", and there are still 100times left to unlock the door, when it is lower than 4.5V, the door lock will not be able to unlock.
6	Static Current	$\leq 80\mu A$	
7	Dynamic Current	$\leq 250mA$	
8	Supply Voltage	$6.0 \pm 0.3V$	New battery voltage (select a high quality #6 1.5V alkaline battery).
9	Operating Temperature	$-25^{\circ}C \sim +65^{\circ}C$	
10	Operating Humidity	20%~90%RH	
11	False Alarm	Support	Five consecutive failures will result in a 1-minute pause
12	Quick Lock	Outdoor Lockout	Press【  】It can be used as a lock or a return key
13	Wired Door Magnet	(Support for optional products only)	Install the door magnet and plug in the power cord, turn on the door magnet function in APP, it will lock automatically when closing the door.



Model No: DS02 Pro (TTLock Model)

Version : 2.0

Date : 2024.08.26

Origin : Zhongshan • China

Issued in August 2024

Printing in China © All Rights Reserved

