

**Ditch The Keys  
Embrace Smart**

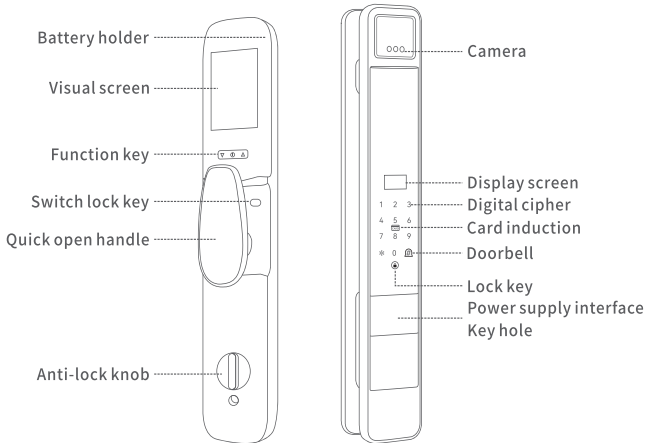
---

**SMART LOCK  
OPERATION MANUAL**

---

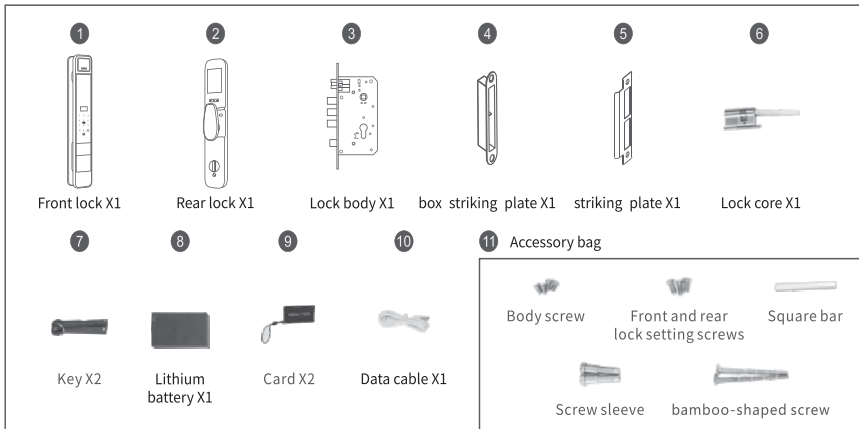


## I. Product Overview



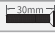
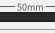
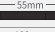



## II. Installation Onstructions

### 1. Products and accessories



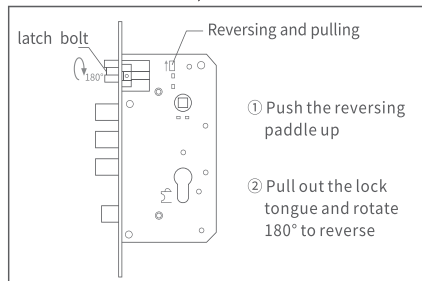
### 2. Accessories bag list

Note: This lock applies to the door thickness of 40mm-120mm, the door thickness beyond this range requires special customization.

Part number and name	Part size (mm)	Applicable door thickness 40-120 (mm)
Body screw		4
Front and rear lock setting screws		4
Screw sleeve		2
Bamboo joint screw		2
Square bar		1
		1

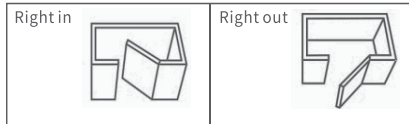
### 3. Lock tongue reversing operation

According to actual needs, change the direction of the door inside and outside the lock, the method is as follows.

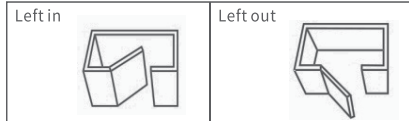


### 4. Confirm the door opening direction

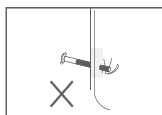
#### ① Right-handed door



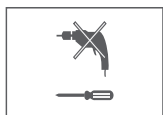
#### ② Left-hand door



### 5. Precautions before installation



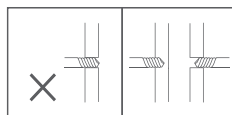
① Do not use force during installation to avoid damaging the lock.



② Use the correct installation tools.



③ Wear glass to protect your eyes when drilling.



④ Drill holes on both sides of the door to avoid damaging the door panel.

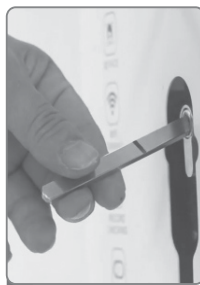
### 6. Installation procedure



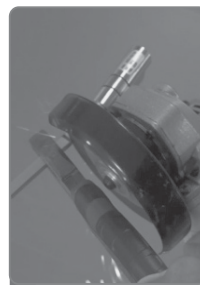
1 Fixed lock body



2 Mounting of lock core



3 Beyond the door about 2 cm thick



4 Cut flat steel



5 Mounting front panel



6 Secure the rear backplane plate



7 Cut screws according to doorthickness



8 Mounting square steel



9 Cut excess square steel



10 The length exceeds the door panel by about 2cm



11 Connect the rear panel data cable



12 Data cable into the door hole



13 All parts into the corresponding hole



14 Fixed rear panel



15 Install battery



16 Installation complete



17 Install the battery cover

### 7. Check points after installation

- ① The face plate is horizontal with the door.
- ② The Latch bolt, Dead bolt and Security Bolt must works smoothly and flexibly
- ③The Front lock is vertical and stable.

## III. Function :

### 1. Doorbell Sound&Light alert

- Long Beep: Operation completed
- 2 Short Beeps: Operation tip
- Siren: Illegal operation
- Short Beep: Key tip
- 3 Short Beeps: Operation failure

## 2. Additional notes

- **Anti-trial alarm:** 1 alarm will be triggered for accumulated input errors for more than 3 times no matter by password, card, fingerprint, or face recognition;  
Another alarm will be triggered when input errors up to 4 times, bringing users to attention; instead of giving a further alarm when input errors have reached to 5 times, the system will be locked for 180s after a prompt "System locked"; No further verification allowed until the alarm and lock-out state released after 180s.
- **Anti-peeping password:** by entering "XXX password XXX", you can add some virtual codes before and after the actual one, then press "# " for confirmation. The password, which at least consist of 6 digits and up to 16 digits at most, must be continuously included in what you have entered.
- The system will automatically switch to the low-power mode if no operations for more than 8 seconds;
- "Low battery power" will be prompted automatically for each unlocking when voltage below 7.0V, however, you can still probably operate for about 100 times (depending on the total battery capacity). In respect of low battery, it is suggested to recharge or be replaced by a new one as soon as practical.

## 3. Number of users

9 Administrators from No.001—009, either by face, fingerprint, password or card;  
191 ordinary users from No.010—200, either by face, fingerprint, password or card.

## 4. System self-inspection

A self-inspection will run on the system every time the machine is powered on.

Contents of self-inspection: Storage ✓→ Touch ✓→ FP and Card ✓→ Normal

Power off 5 seconds after self-inspection is completed. For a successful system verification, the green logo indicator will stay on, otherwise, the red one will be lit.

## 5. Aging Mode

Enter 9 9 9 and press # to confirm. The aging mode is displayed. Press \* to exit the aging mode.

In aging mode, the door lock will automatically switch and lock operation, and accumulate the number of switch and lock time.

# IV. Operation Instructions

## 1. Factory Settings

Before adding administrators, please input "8 8 8" followed by "#" for confirmation, to visit the Factory Settings menu

1. Direction [-] [-] [-] Left Open; [->] Right Open
2. Motor Torque [Mid] [low] Low Torque; [Mid] Medium Torque; [Hi] High Torque
3. Invert Time [400] [100 x 900]/ms

Factory setting parameters must be combined with the lock and door structure, for abnormal operation may be caused by any incorrect settings.

### 1. Direction:

When you select 1, the interface displays: door opening direction [left]; when you press 1 again, the interface displays: door opening direction [right]

Press the number key "1" to set the door opening mode, and press "\*" to return to the main screen;

### 2. Motor Torque:

Select 2. The interface displays "Motor torque [low]", then press 2, the interface displays "motor torque [medium]", then press 2, the interface displays "motor torque [high]"

Set the motor torque by digital key "2", press "\*" to return to the main interface after setting;

\* Note: The default motor torque of the system is low, and the torque needs to be properly designed to ensure that the normal locking state can be achieved.

### 3. Invert Time:

If you select 3, "Reverse Time [400]" is displayed. Press 2 again, the interface displays "Reverse time [450]".

Press "3" to set the reversal time, the range is 100-900 ms, and press "\*" to return to the main screen.

\* Note: The reversal time should be properly designed to ensure that it is in the normal locking state.

## 2. Unlocking

Enter authorized administrators and users to perform unlocking actions, Voice prompt: "Verification successful, unlocked", the machine synchronously displays the user information. You can press Unlock Key on the rear panel of the door to unlock.

After unlocking the lock, wait for 15 seconds. During this period, no verification operation is performed.

\* Note: The initial password is 123456, you can use the initial password to enter the setting or unlocking operation. After the administrator is added, the initial password becomes invalid.

## 3. Locking

Execute the door closing action, press the "lock key" on the touch pad, you can lock it with one key; Voice prompt: "Locked".

\* Note: Press the "lock key" on the rear panel of the door lock to perform the lock action.

## 4. Initialization Operations

• **Method 1:** Start a quick initialization by the "Set Key" on the back panel.

- ① Long press "Set Key" for about 6 s before releasing it to start initialization, followed by a voice prompt "Initializing"
- ② That done, a voice prompt "Initialization completed" and all contents emptied; After that, the lock can be undone by any face, fingerprint, card, password (123456)

• **Method 2:** operations by entering the setting menu

- ① Once the admin verification is passed by press keys of "\*" + "#", you will enter the main settings menu;
- ② Press the number key "4", select "System Query", and here before you is the main interface as below:
  1. Record Management 2. Store In for 3. Factory Reset
- ③ Press the number key "3", select "Restore Factory Settings", and you will hear a voice broadcast "Please confirm if you want to restore factory settings," and once confirmed by "#" the initialization will stored on the system.

\* Note: after initialization, the system time will remain unchanged, while all the user information is gone.

# V. Users Management

## 5.1 Add users

9 administrators with the first 9 numbers from 001—009 are specially reserved for them, either by face recognition, fingerprint, password or card; While, the number from 010-200 are for ordinary users, Users can be added:

- **Method** : Press keys "\*" + "#" to enter the Settings menu;
- ① Press keys "\*" + "#", you will hear a prompt "Please verify the admin" ...
  - ② And once verification completed, you will come to the system main interface
  - ③ In the system main interface, you will hear a voice prompt:
    1. User Management 2. Remote Management 3. System Settings 4. System Query
  - ④ Select the number key "1" to the User Management Interface where you can:
    1. Administrator 2. Normal Users 3. Delete Users

### • Add Administrative Users

- ① Select the number "1" and enter the added management user interface
  1. Input fingerprint password card• 2. Input human face(Only support face model operation of this function)
  3. Input palm vein(Only support palm vein operation of this function)
- ② Select the number key "1", enter the administrator number, 001-009 either, or directly press the confirmation key to default the number;
- Input the administrator or user information (fingerprint, password or card);
- Input the password information, input 6 to 12 digits, need to input 2 times, 2 times of input results must be the same;
- Input the card information, the card distance panel is within 0-10mm, successfully prompt "successful operation", if the card repeatedly
- Input the fingerprint information and put the finger on the fingerprint module. According to the voice prompt "Please input again", raise the finger and place it again on the fingerprint module until the prompt "successful operation" is successful, then the fingerprint input is successful;

\*Note: If the machine is not installed with the fingerprint module, the fingerprint operation will not be supported.  
Valid password digits are 6-12 bits.

- Select the number "2", start to input face information, infrared flash light;  
Facing the face recognition module, turn the head according to the machine prompt, and completing the input, the machine prompt "input";
- Select the number "3", start to input palm information, infrared flash light;

\*Note: 1.If the machine is not installed face recognition module, it will not support face operation;  
2.About 0.7-1 meter away from the machine, too close or away, the machine will fail to operate;  
3.Head rotation range should not be too large, the rotation is not standard, the machine will fail to operate;  
4.Try not to have bystanders when recording, and do not cover the face

#### ▪ Add Normal Users

③Select the number • 2\* to enter the Add a common user interface

- 1.Input fingerprint password card2.Input human face(Only support face model operation of this function)
- 3.Input palm vein(Only support palm vein operation of this function)

②On this screen, you can enter the face, password, card, or fingerprint information of a common user.  
(The operation is the same as adding administrative users)

\* Note: A common user can be entered only after at least one administrator is entered.

## 5.2 Delete the user

Select the number "3" and enter the delete user interface

1. Delete by the number
2. Delete all

#### ▪ Delete by number

- ①Under this interface, enter the "1" key, voice prompt "please enter the number";
- ②Enter the user number to be deleted, press "#" confirm, voice prompt "successfully", the system will delete the user information under this number;

\*Note: Under this interface, the administrator of the current login settings interface cannot be deleted.

#### ▪ Remove all users

Under this interface, enter the '2' key, press "#" to confirm, and perform the operation of deleting all users

\*Note: Under this interface, the administrator of the current login setting interface will not be deleted.

## VI. Remote Management

System main interface below, voice prompt:

1. User management
  2. remote management
  3. system Settings
  4. system query
- Select the number "2" and enter the remote management interface:
    1. Add remote users
    2. Delete remote users
    3. Add remote control users
    4. Delete remote control users
  - Select the number "1" and enter the Add remote user interface:
    - 1.WiFi 2. Hot spots
 Select numeric keys 1 and 2 and perform operations as prompted to add a network user.
  - Select the number "2" to delete all remote users.
  - Select the number "3", use the random equipped remote control, press any button, you can add the remote control user.
  - Select the number "4" to delete all remote control users.

\*Note: Some machines do not have the remote control function, and there will be no 3 / 4 option.  
Without special instructions, the mode of "2-hot spot" is generally used for direct operation.

## VII.System Setting

System main interface below, voice prompt:

1. User management
  2. Remote management
  3. System Settings
  4. System query
- Select the number "3" and enter the system Settings interface
    1. Time setting
    2. Language volume
    3. Lock setting
    4. Face setting

### 7.1 Time Setting

On this screen, enter the 1 key to set the time

Enter the corresponding time and press the "#" key to confirm.

\* Note: Time format, such as: 2024 06 01 08:05, June 1, 2024 8:05, "0" should be filled.

### 7.2 Language Volume

Under this interface, enter the "2" key to set the language and volume

1. Language [Chinese] 2. Volume [high]

- Input number key "1", voice prompt "operation", set to English mode; Switch between the language settings through the number key "1"
- Enter number key "2", set volume; enter number key "2", set volume low; enter number key "2", set volume mute; Switch between the volume settings with the number key "2"

### 7.3 Unpicking Setting

Under this interface, enter the "3" key, enter the unlocking setting interface, voice prompt:

1. Locking time [2S] 2. Delayed locking [close] 3. Anti-skid alarm [close] 4. Combination unlocking [close]

▪ **Back lock time:**

Select the number key "1", you can set the lock back time, effective lock back time 2-9 seconds;

▪ **Time-lapse lock:**

Select the number key "2", you can set the delay lock time, the time level is set as: off / 5 / 10 / 15 / 20 / 25 / 30 seconds;

▪ **Brake alarm:**

Select the number key "3" to turn on or off the anti-skid alarm function;

▪ **Combination unlock:**

Select the number key "2" to enable the combination unlock mode

\* Note: After the combination lock is opened, except for the administrator, two ordinary users need to pass the verification to open the door.

### 7.4 Human body sensing (Only support face model operation of this function)

Under this interface, enter the '4' key to enter the lock setting interface

1. human body induction [near] 2. stay capture [close] 3 stay alarm [close]

▪ **The human body induction setting**

Operate the '1' key, set the human body detection function, can choose: off (off), near (near), far (far).

▪ **Stay capture setting**

Operate the "2" key, set the stay capture function, will turn on or off the stay capture function;

Open the stay capture, the human body detected, wake up the machine, the 3D module does not detect the face, will wake up the cat's eye module, to capture photos (some 3D may not have this function, with the cat's eye module support), the default off, because the capture photos will be more power consumption, after the shutdown will not wake up the cat's eye to capture;

▪ **Stay alarm setting**

Operate the '3' key to set the stay alarm function, which will turn on or off the stay alarm function;

Turn on the lingering alarm. After turning on the alarm, if the number of system errors accumulates to 3 times, the system will give an alarm prompt. If the number accumulates to 5 times, the system will lock any user within 180s and 180s

Can not open the lock, turn off the stay alarm, the system trial and error alarm will be turned off.

\* Note: Human body sensing uses infrared reflection principle, please try to avoid obstacles, so as not to detect abnormal; If the human body is in the sensing range for a long time, the machine will enable the power saving mode and actively turn off the infrared detection function;

When the person moves outside the sensing range (0.6-1 m), the infrared detection function will restart.

(When the customer chooses the configuration of the human body sensor is the radar module: the human body sensor uses the radar detection principle, as long as the movable object enters the sensing range, the machine will wake up 8S, and the user is asked to complete the detection within 8S, when the verification face exceeds 8S, the system will prompt the operation failure and enter the sleep state. The sensing distance of the radar is 0.6-1 meters.

If the user stays in the detection range for a long time and stands quietly, the radar will not start. When the user starts to move, the radar will start.

## VIII. System Inquiry

Under the system main interface, the voice prompt:

1. User management 2. Remote management 3. System Settings 4. System query
- Select the number "4" and enter the system query interface
  1. Record management 2. Restore factory settings

### 8.1 Record Management

In the system query interface, select "1" to query the operation record.

Display: 1. Query in order 2. Query by date 3. Clear records

- **Query in order:**  
In the open door record query interface, select the number key "1", you can press "2" "8" up and down the page, record query.
- **Query by date:**  
In the record query interface, select the number key "2" and enter the date of the query record  
Display: Please enter the time 20--year - -month - -day
- **Clear the record:**  
Press the number key "3", and press "#" to confirm, all operation records will be cleared.

### 8.2 Restore the factory settings

Under this interface, enter "2" key, press "#" to confirm, the system performs initialization operation.

## IX. Low voltage warning

When the system detects that the battery voltage is lower than or equal to 7.0V, every time the door is opened, it will prompt "insufficient power, please charge in time".

\* Note: After the low voltage alarm, the door lock can still open about 100 times (related to the total capacity of the battery), please give the rechargeable battery or replace the new battery as soon as possible.

## X. External power supply

When the internal battery is exhausted and can not open the door, use 5V USB power supply, external backup port, emergency charging.

\* Note: Automatic lock external power supply only provides outside emergency charging function, do not charge for a long time.

The battery can be removed and charged separately, and some batteries can be charged directly through a 5V charger.

## XI. Doorbell or mute function

Press the doorbell button on the touch pad, and the rear panel will sound a doorbell to alert the user that there is someone outside the door.

Part of the door lock panel design has a one-button mute function, after enabling this function, the switch lock operation, the voice is no longer prompted, suitable for night operation, so as not to affect the rest of the family.

## XII. Human body detection (Only support face model operation of this function)

The effective recognition distance of human body detection is 0.6-1.0 meters.

When the person approaches the effective identification distance, the door lock will activate, indicating that the machine has detected the human body. Users need to face the door lock, face recognition.

Detection distances may vary depending on height, clothing, or lighting conditions.

## XIII. Presentation mode (Only support face model operation of this function)

When the door lock is not recorded by the administrator, the machine is in demonstration mode.

In the demonstration mode, any face in the effective identification area of the door lock can be unlocked.

In demonstration mode, after the door lock is opened, there is no need to wait 15S, and the lock can be repeatedly verified and unlocked.

## XIV. Anti-skid alarm

When the anti-warping alarm is turned on and the anti-prying switch is triggered, the voice will announce "the system is locked", the red light will flash, the alarm will continue for about 12S, and the anti-prying alarm will be turned off after 180 seconds.

After the machine is on standby and the key light is off, if the alarm time is not reached, wake up the machine and continue to alarm.

After using the correct user information verification, the lock can be opened normally, and the alarm can be cleared at the same time.

\* Note: When the machine is initialized, the anti-skid switch is turned off by default.

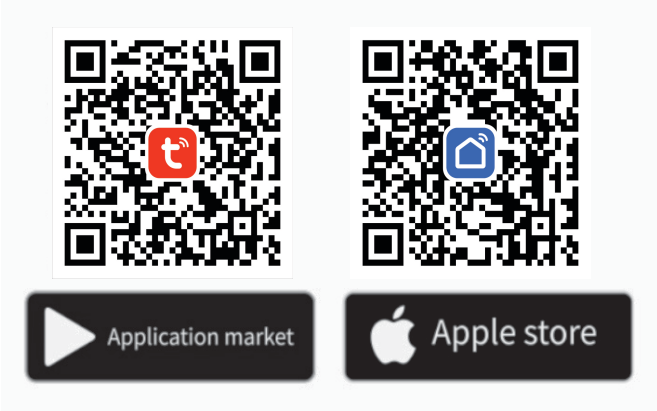
## XV. Product parameter

Content	Index
Power supply	DC7.4V (lithium battery, recommended capacity above 5000mAh)
Undervoltage warning	The < DC7.0 V
Emergency power supply	5V (Micro USB)
Static current	<130-150uA (not connected)
Dynamic current	Wake-up state: <300mA (average)
	3D structured light working state: <800mA (average)
	Motor working state: <2A (average)
network	Standard WI-FI
Remote control	Remote control distance 5-10 meters; Unlimited quantity
Electric machine	Support 8V standard motor
Face capacity	Total 200 users
Fingerprint capacity	
Cryptographic capacity	
Card capacity	
Card sensing distance	0-5mm
Human sensing distance	0.6- 1.0 m, fine tuning
Face recognition	Vertical installation Angle less than or equal to 15° (height 1.2-1.9 meters)
Operating temperature	- 10 °C ~ 60 °C
Working humidity	45-90%RH
Storage temperature	- 20 ~ 70 °C
Storage humidity	45-90%RH
Antistatic capacity (bare board)	Air discharge > ±15KV; Contact discharge > ±8KV;

## XVI.WI-FI Operation instructions (AP Mode)

### 16.1 Download the Tuya App:

- To connect to the Internet, you must purchase a version with Tuya WiFi function  
Scan the QR code below to download the APP

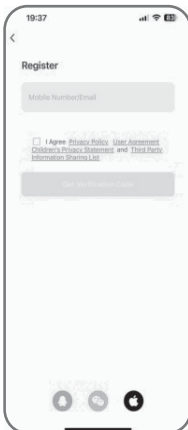


Search for "Tuya Smart" or "Smart Life" in the Android App Store or Apple Store

### 16.2 Register and log in:

- Register a Tuya app account and log in.


#### ① Register



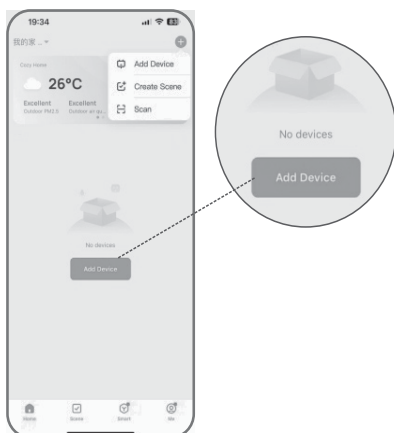
#### ② Login



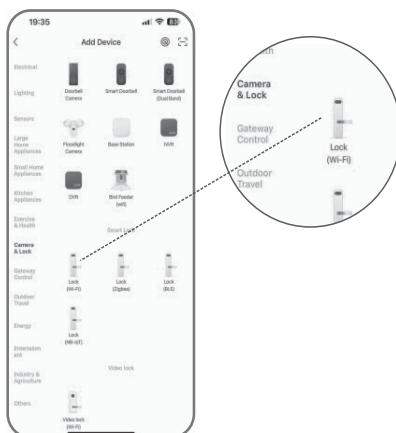
### 16.3 Networking operation:

Click the "Add device" button (or click the No. Key in the upper right corner  to add device), click "security sensor", select "Door lock WIFI" again to enter the door lock adding page, click to confirm the keyboard light flash, enter the WIFI and password connected device at home; Wait for the connection to complete.

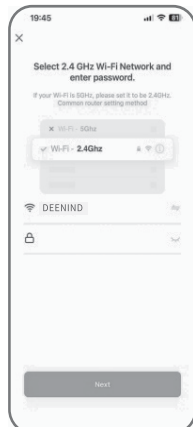
#### ① Add device



#### ② Find a device

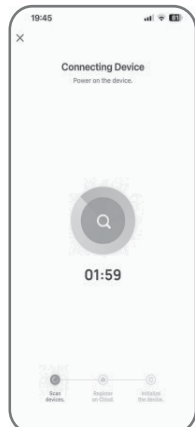


#### ③ Adding a Network



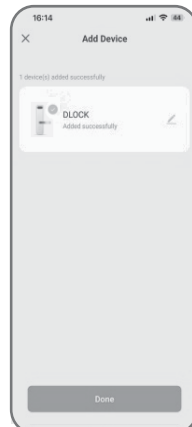
Choose a 2.4GHz WiFi network  
And enter the password

#### ④ Connecting equipment

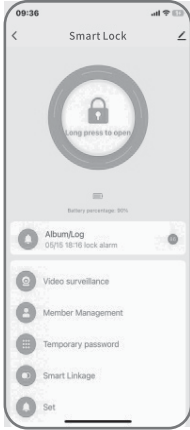


Waiting to connect device

#### ⑤ Networking success



Complete network connection



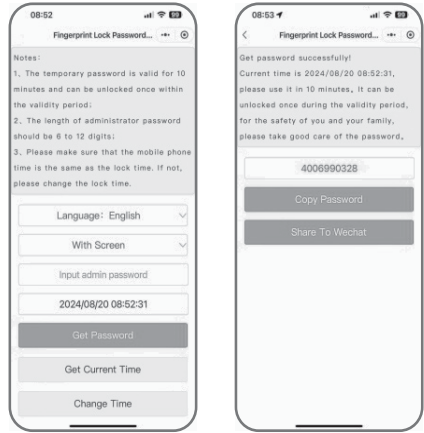
Smart door lock management main interface

- **Precautions:**
  1. Please register "Administrator user" before connection;
  2. Select the connection, the lock end of the "\*" and "#" number keys will light up; if the connection is not successful after the 180S, the system automatically returns to the previous page.

- **Remote unlock request:**  
To open the remote lock, press the doorbell on the door lock surface to request unlocking, and the mobile APP will receive the request information.

## XVII. Wechat Unlock

- ① Enter wechat and select the "Discover" button at the bottom;
- ② The interface pops up "small program", click "small program", search "fingerprint lock password";
- ③ Select the small program "fingerprint lock password" to enter the small program interface, Select "Whether the door lock has a display screen";
- ④ Enter the set administrator password, as shown on the right,  
Then click "Get password", you will get a set of unlock password, as shown on the right;  
You can share it with friends on wechat or copy the password to share it with friends in other ways.



- \* Note :
1. need to pre-set the administrator password on the door lock, the user password does not have wechat unlock permission;
  2. Please pay attention to the lock time, need to be consistent with the mobile phone; If the lock time is not correct, you can select "change time" and enter the lock time to ensure the unlocking function;
  3. Wechat unlock password is valid for 10 minutes, and in order to ensure security, once unlocked will be invalid;
  4. It is necessary to confirm and select whether the door lock has a display screen, and the door opening password generated by the wrong selection is invalid.

## XVIII. WiFi production detection mechanism

- ① First change the name of the mobile phone hotspot or WIFI to tuya\_mdev\_test and the password to test1234;
- ② "279" + "#" Enter the WIFI production test, after receiving the production test command, the WiFi module will actively connect to the hot spot tuya\_mdev\_test, and automatically restore the factory Settings after the production test is successful, and the voice will prompt "Operation succeeded."



**Ditch The Keys  
Embrace Smart**